



LUTHER MEMORIAL lutheran church

Actively Sharing Christ's Love in Community



Messenger

November, 2019

All are welcome at Luther Memorial.



WORK together
and
HELP each other.



THE LUTHER MEMORIAL *MESSENGER* is published by
Luther Memorial Lutheran Church
13047 Greenwood Avenue N, Seattle, WA 98133
206.364.2510 | www.luthermemoralseattle.com
office@luthermemoralseattle.com

Rev. Julie G. Hutson, Pastor
Laura Harris-Ferree, Minister of Outreach
Raj Lingappaiah, Congregation Council President
Chrade Younkin, Interim Musician
Mary Chamberlin, Office Administrator

November 15 is the deadline for articles in the December issue.

PJ's Page

Late autumn is a season of anticipation. We anticipate the coming Advent, (which is also a time of waiting) and we anticipate the beauty of that liturgical season. I love the lighting of the Advent wreath and the singing of the hymns that are filled with longing for the arrival of the Messiah.

Late Autumn is also a time when we begin to solidify and anticipate how we will spend Thanksgiving and Christmas holidays. Maybe we even start to think about where we'll ring in the new year.

In the life of the Church, this month invites us to a remembrance of the saints who have gone before us and the saints now among us. The communion of saints surrounds us in shimmering holiness as we recall and give thanks for them.

On the final Sunday of November, we will observe the Reign of Christ Sunday, the final Sunday in the Church year, before we begin it all again.

In this congregation, it is also Stewardship season, when we anticipate the financial commitment we will need from our members and friends to fund the various ministries of this place. This year, our theme is "A Generous Table" and you will find this theme woven among our worship life, the sermons we hear, and the outreach to the community.

A slightly different change from previous years is that we will present to the congregation a budget first and then ask for the financial support to fund it. In the past, we have tried to craft a budget together based on Giving Intent (pledge) cards turned in and giving histories. This year, by addressing it this way, we are saying that the actual ministries come first.

The hard financial costs are there for us to see and respond to.

Stewardship, you have heard me say often, is simply what we do with what we have. How we offer our financial resources is a part of it, to be sure. How we are present in the life of the community is another important component. Do we regularly attend worship? Do we serve in some way, using our talents and gifts for the good of this faith community and the work it does in the world?

Dear Ones, I hope you will join me in a time of prayer for the future ministry of this place. We do so much good in this community! That is to be celebrated! And we believe that the work we do is a part of our discipleship (see survey results elsewhere in this newsletter). Please prayerfully anticipate how you will support the ministry that is done in this place.

I give thanks for your faithfulness and your generosity,

Pastor Julie Hutson +

PRAYERS FOR HEALING

Prayers for healing takes place every third Sunday following worship, in the Chapel. 

Such prayers may be for oneself, a friend, a family member, or for a particularly troubling issue, or for the world.

“³⁴ The ruler will say to those on the right, ‘Come, you blessed of my Abba God! Inherit the kingdom prepared for you from the creation of the world! ³⁵ For I was hungry and you fed me; I was thirsty and you gave me drink. I was a stranger and you welcomed me; ³⁶ naked and you clothed me. I was ill and you comforted me; in prison and you came to visit me.’” Matthew 25: 34-36 (Inclusive Translation)

One of the most requested items in homeless shelters is socks. Socks seem like such a simple request, but they can honestly be life changing. Keeping your feet warm and covered can save your life. Simply having protection to walk around is a necessity that saves folks from illness or injury. No one wants to walk around with no socks or wet and dirty socks. Socks are so simple and yet so necessary.

Night Watch is a ministry “Serving the night community in the name of Christ”. As they state, socks will not solve the crisis of homelessness nor grant housing, but it will provide immediate relief to those on the streets. It is possible that this one pair of socks will give someone the ability to walk to a job interview or stay warm at night.

Jesus calls us to do what we can where we are. So, while our sock donations will not solve homelessness it will at least provide some comfort for our friends without housing. I hope you will join me in supporting the Night Watch sock drive. Look for the bin in the narthex!

Peace,

Laura Harris-Ferree, Minister of Outreach and Community

NO COMPUTER? YOU STILL GET THE LMLC NEWS EACH WEEK!

It was recently noted that those who do not use a computer to receive email communications do not receive the contents of the congregation’s Mid Week Update, that is sent out as a “blast” every Wednesday. Good News! Every facet of information contained in that Mid Week Update is ALSO found in your Sunday bulletin. The calendar is in the announcement section, as are the weekly announcements. The worship servers for the current and upcoming Sunday are also in the bulletin. Readings are, of course, listed within the liturgy. Pastor Julie’s reflection is now being printed on the inside front page of the bulletin. We hope you enjoy having all of this information and encourage you to take your bulletin home with you to keep it close at hand.

DIRECTORY

In order to shield your privacy, we are not leaving LMLC directories in the narthex. There are many people who come in and out of the building throughout the week and there is no way to guarantee that your information would be protected.

If you would like to have a printed directory, with addresses, phone numbers, and email addresses, please let Mary, in the office, know via email, phone, or a note in the office box



LMLC News and Events

Happy November Birthdays!

08 Daniel Lungappaiah

18 Julie Moe

10 Andrew Wesly

28 William Long

Happy Anniversary!

Morgan & Kay Brassfield

November 8

ALL SAINTS

On Sunday, November 3rd, we will observe All Saint's Sunday and remember especially those from this community of faith who have died since last All Saint's Day. You are also invited to remember those in your own life who are no longer living by bringing in photos or other memorabilia to display at the "Table of Saints" in the sanctuary. In this remembering, the communion of saints is acknowledged as being very present with us.

FIRST SUNDAY FAITH FORUM

On Sunday, November 3rd, we will welcome Chrade Younkin, our interim musician, as our speaker at First Sunday Faith Forum. Chrade has taken many trips to do work and be present in communities in El Salvador. Having just returned last month from his most recent trip, Chrade will share stories of his time there.

BISHIOP'S VISIT TO LMLC

On Sunday November 17th we will welcome the Bishop of the NW Washington Synod, Bishop Shelley Wee, to Luther Memorial. Bishop Wee will preach during worship (she's a GREAT preacher) and she will be with us for lunch and some Q & A following worship. Let's give Bishop Wee a warm Luther Memorial welcome!

STEWARDSHIP

During the month of November we will observe and consider our annual Stewardship emphasis as we prepare to adopt and fund the 2020 LMLC budget. Our theme this year is "A Generous Table" and each Sunday we will consider various aspects of stewardship and our role in setting a generous table for the work of ministry at Luther Memorial. Giving Intent cards will be collected on November 24th.

Watch for a new twist on our Stewardship emphasis this year and prayerfully consider how you will help us Actively Share Christ's Love in Community!

LMLC News and Events



It's sock time once again
at Operation Nightwatch!

Let's start collecting socks to "Sock It to Homelessness!"
(formerly known at LMLC'S as SOCK-TOBERFEST)

Drop off **new men's socks** in the green barrel located in the Narthex. Socks won't change the world, but will bring real, immediate relief for Seattle-area homeless people.

The Annual Sock-It to Homelessness sock drive kicks off:

Sunday, November 24, from 12:30 pm to 2:00 pm
302 14th Ave S, Seattle

This is a family-friendly event. Everyone is welcome. We'll be dropping off new men's socks that we've collected and take a quick tour of the building.



Operation Brown Bag

Lunches are handed out Monday-Friday, 10 am—Noon to anyone who is hungry. Our volunteers prepare a well-rounded sack lunch for this program.

The following items are typical of what goes into the sack lunches:

- **Proteins** - Small can of Vienna sausage, packet of tuna or salmon, a tuna or chicken salad lunch and cracker kit. (Must be able to be opened without a can opener).
- **Fruit** - Fruit cup, applesauce or raisins.
- **Drink** - Juice box or pouch. Additional bottle of water, when available.
- **Dessert** - Pudding cup, gelatin cup or small pack of cookies.
- **Grains** - Small bag of chips, package of crackers, and/or a granola bar.
- **Care Items** - We always hand out individually wrapped hand wipes i.e. Wet-Ones. In colder weather, fall/winter we give out hand warmers, lip balm and extra water if we have them available.

If you'd like to donate supplies, please drop them off at the church. If you'd like to ASSEMBLE lunches, please email/call the office to get starting directions. Lunches can be made at any time that you have time available to volunteer!

THANK YOU to all the current volunteers and those donating items!!! This ministry wouldn't be possible without YOU!

LMLC News

SURVEY RESULTS

Our thanks to everyone who filled out their survey and turned them in by the October 13th deadline! Those results were compiled, considered by the Council, presented at the Fall Forum and are also printed here.

1= Strongly disagree 2= Somewhat disagree 3=Neither agree/disagree 4= Somewhat agree 5= Strongly agree

WORSHIP

Weekly worship on Sunday is an important part of my life.

1=0 2=1 3=0 4=5 5=20

I am interested in worship opportunities on a day other than Sunday.

1=3 2=5 3=12 4=4 5=2

I find our worship services to be meaningful.

1=0 2=1 3=2 4=6 5=17

I find our worship services to be accessible.

1=0 2=0 3=1 4=8 5=17

SOCIAL ACTIVITIES

Social activities are an important part of my membership at LMLC.

1=1 2=0 3=7 4=10 5=8

I feel that I know the other people at LMLC well.

1=0 2=3 3=9 4=10 5=4

We have a good balance of social activities and other events at LMLC.

1=0 2=1 3=8 4=12 5=5

SOCIAL JUSTICE

It is important to ground our ministry in social justice.

1=1 2=0 3=1 4=9 5=14

Social justice is an important part of understanding the Gospel.

1=1 2=0 3=1 4=9 5=15

We have a good balance of social justice related events at LMLC.

1=0 2=1 3=7 4=7 5=9

STEWARDSHIP

I understand that my financial contribution equips the mission of LMLC.

1=0 2=0 3=0 4=2 5=24

The annual Stewardship emphasis helps connect my faith to my giving.

1=1 2=0 3=6 4=10 5=8

Talking about money in church is uncomfortable.

1=4 2=4 3=7 4=9 5=2

COMMUNITY OUTREACH

LMLC does a good job of reaching out to the community around us.

1=0 2=1 3=2 4=9 5=13

Outreach is important to our mission in the world.

1=1 2=0 3=0 4=5 5=20

COMMUNITY INREACH

Caring for our members is an important part of our ministry.

1=0 2=0 3=1 4=4 5=21

I would be willing to participate in efforts to care for members at times of illness or other need.

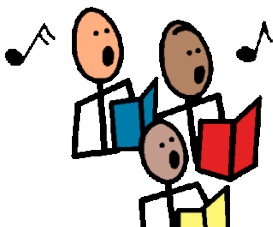
1=2 2=2 3=8 4=8 5=5

LMLC News and Events

EDUCATION

Learning about education matters related to faith is important in my growth.

1=0	2=0	3=2	4=8	5=16
I would be interested in studies for adults on Sunday morning.				
1=1	2=1	3=11	4=8	5=5
I would be interested in studies for adults on a weekday evening.				
1=4	2=6	3=10	4=4	5=2
I would be interested in retreat style opportunities.				
1=2	2=2	3=12	4=6	5=4



MUSIC NOTES

The LMLC Choir is singing in worship once again (except for the first Sunday of every month). If you are interested in singing with the choir, join them for rehearsal on Sunday mornings at 9:15am.



THE CHAPEL

Available for use by everyone, our chapel is intended as a more intimate space for prayer, reflection, and small group use for worship and contemplative practices together. It is open at all times for folks with door codes to access the building and is open from 9am-2pm every weekday for the community at large.

FACILITIES AND MAINTENANCE

The Facilities and Maintenance Ministry Team is looking for new members. This team generally meets once a month, on the **third Tuesday of the month at 5pm**. It supports Mary Chamberlin, who works on Facilities from a staff level, and works with Pastor Julie as well.

If you are interested, please speak to Pastor Julie or send her an email at pastor@luthermemorialsattle.com

DST ends November 3rd



ELCA Prayer Ventures



Evangelical Lutheran Church in America

God's work. Our hands.

1 All Saints Day Give thanks for people passed from this life who have cared for us, inspired our dreams, nurtured our faith, and equipped and encouraged us for the challenges of life, and who have boldly exemplified compassion, justice, mercy and generosity.

2 National American Indian Heritage Month Give thanks for the gifts and witness of American Indian and Alaska Native members of the ELCA. Pray for native congregations and ministries and the work of the American Indian and Alaska Native Lutheran Association, all grounded in reconciliation and the mutual building up of the saints — people of all backgrounds, tribes, regions, communities, congregations and unique needs.

3 Ask God to help us be fearless and radical in our love and service, following the example of Jesus by demonstrating love, respect, empathy, mercy and active concern for all, especially for people suffering poverty, hunger and illness, those forgotten and neglected, and our enemies.

4 Pray for people living with and recovering from the devastation and loss of life in the Bahamas and along the southeastern coast of the United States following Hurricane Dorian, and for Texas communities similarly suffering from flooding caused by Tropical Storm Imelda. Ask God to give these people strength and hope, resources for recovery and, during this time of vulnerability, protection from subsequent storms. Ask the Spirit to stir our caring support, generosity and volunteer service during short- and long-term recovery efforts.

5 Pray for the leaders of our communities, states and nation, that they will ground their priorities, decisions, work and legislative actions in concern for justice, the environment, the well-being of people in need and the diverse contexts and communities in our country.

6 Entrusted with sharing the gospel and doing God's work in the world, pray that we will be faithful in our baptismal calling and encourage one another in following the word and ways of God.

7 Pray for the leaders of our church who serve on the ELCA Church Council. Ask the Spirit to guide their work of enabling and supporting our church as we strive to do God's work in the world with thoughtfulness, integrity, respect and partnerships that share a common vision.

These petitions are offered as guides to prayer for the global, social and outreach ministries of the church. Thank you for your continued prayers for the life and mission of this church.

8 Remember in prayer students who find school challenging or difficult, and pray that the people in their lives will be patient, encouraging, creative and skilled in understanding the unique ways in which we each learn.

9 Give thanks that when we confess our sins, the good we have failed to do and our misbehaviors to God, we are met with mercy and forgiveness.

10 Rejoice and give thanks that in God all have life — eternal, abundant and renewed life for doing God's work in the world and serving our neighbor now.

11 Veterans Day Remember people who have served or are currently serving in the military, and give thanks for their service and sacrifices. Pray for military chaplains, caregivers, congregational and synod programs, and special ministries that care for veterans and their families.

12 Lutheran outdoor ministry leaders are joining with their ecumenical peers and partners in Lake Junaluska, N.C., for the Great Gathering conference. Pray for their time together, that they might build relationships, discover each other's gifts and equip vital ministries to meet the emerging needs of God's people.

13 Pray that, in the midst of the questions, distractions, hesitancy and opposition we experience in daily life, we will remain focused on the good news of Jesus Christ and on encouraging one another to share the gospel and do good in the world.

14 The ELCA is the first North American denomination to declare itself a sanctuary church body. As a sanctuary church, the ELCA is committed to serving and supporting migrant children and families in communities across the country. Pray that we and our faith communities, moved by the Spirit, will see welcoming people not as a political issue but as a matter of faith.

15 Give thanks that God is attentive to our prayers, acting as our refuge, strength and guide throughout life and in every situation.

16 Remember in prayer ELCA missionaries serving in partnership with the Evangelical Lutheran Church in Tanzania to support theological education and health care in clinics and a network of 21 hospitals.

17 Anticipating Christ's return, ask for God's help to recognize and value what is important to God.

18 Give thanks for the leaders, ministries and resources of our church that deepen our understanding and practice of stewardship and generosity. Pray that we might spread the gospel, serve our neighbor and do God's work in the world with the gifts and resources entrusted to our care.

19 Pray for the vision and impact of the 26 congregations, synods, ministries and ELCA-related agencies and organizations that have been awarded mental health ministry grants. Pray that their work will inspire others as they address mental health issues and develop new approaches to advocating for and assisting people with mental illness and their families.

20 Ask the Holy Spirit to guide and shape our lives so that we might exemplify how to live and work together, care for one another, exercise generosity and tirelessly do what is right and just for the sake of our neighbor.

21 Pray for congregational and synod ministries and ELCA-related organizations that attend to the unique needs of women and men by encouraging faith, offering opportunities for service, helping develop and support leaders, creating safe environments for conversation and mutual care across generations, and affirming both our unity and our diversity in Christ.

22 Sing praises and make joyful noise for the wonderful things God has done and for God's undeserved steadfast love and faithfulness.

23 Praise God for the critical work we do together through ELCA Disaster Response and for our partners, who bring God's hope, healing and renewal to people in the United States and around the world whose lives have been disrupted by natural disaster.

24 While we profess our faith in Jesus Christ, we sometimes puzzle over who Jesus is and over his resurrection. Pray that our wisdom and faith will grow and mature as, together with our sisters and brothers in Christ, we pray, study, converse and give ourselves over to the Spirit's inspiration.

25 Remember in prayer our ELCA missionaries and young people serving as Young Adults in Global Mission as they support the programs and ministries of companion churches in Senegal, Eswatini, South Africa, South Sudan, Kenya and Zimbabwe.

26 Give thanks that — despite war, conflict, hunger, poverty, suffering, illness and injustice — “God is our refuge and strength, a very present help in trouble.” Pray that we will be emboldened by this grace-filled promise and reality to help and strengthen our neighbors in every situation and corner of the world.

27 Pray for people who suffer hunger, food insecurity or lack of access to the nutrition necessary for life and health. Ask that the Holy Spirit will move us to bring relief, instill hope and end hunger and poverty wherever it exists.

28 *Thanksgiving Day* Give thanks for the abundant resources God has entrusted to us, and for family, friends and other people who bless and enrich our lives. Give thanks that the spirit of God is generous, compassionate and fair, and that our unique gifts and abilities are brought together in the body of Christ for the sake of the world, especially those in need who have been neglected.

29 On “Black Friday” — a day of sales, buying and consumption — take time to reflect prayerfully on the difference between wants and needs, on generosity toward our neighbors, on stewardship of wealth and abundance, on everything God has entrusted to us, and on our true identity as children of God who are loved, forgiven and granted a new vision of life.

30 Give thanks to God for rescuing us from the power of darkness and bringing us into the light of new life in Jesus Christ — our Lord and savior, head of our church and the one who has reconciled us to God.



This resource may be copied and shared among members and friends of the congregations of the Evangelical Lutheran Church in America. Contact info@elca.org for additional information. Evangelical Lutheran Church in America, 8765 West Higgins Road, Chicago, IL 60631. Telephone: 800-638-3522, ext. 2458.

Synod News

The Spirit

Volume 36, Number 11

We turn to serve and love our Neighbor

By Bishop Shelley Bryan Wee, NW Washington Synod / ELCA



I share two stories that I heard in the last two weeks.

The first story I heard was from Pastor Ron Glusenkamp from a trip he took to Senegal with other ELCA folks:

We landed in Dakar, Senegal where the people are 95% Muslim and the other 5% are Christian or something else. Our group traveled to a small village to visit a

Lutheran health center that is funded by ELCA World Hunger. When we arrived, we met ten guests who were living there. They all were HIV positive and all had been banned from their homes and so lived together with about a hundred others at this Lutheran health center.

When we asked the group how they were doing, one of the women spoke. She spoke in her own dialect that was translated to English. She spoke eloquently and simply. She said, "If it wasn't for this Lutheran clinic, I would be dead."

The second story I heard while attending the Conference of Bishops in Chicago. There we heard of Lutheran owned and operated Augusta Victoria Hospital in East Jerusalem. The United States government had voted to continue funding this important medical center but for some reason they are not releasing the money. This is putting people at risk. Chemotherapy is not able to be administered. Surgeries are unable to be performed. Children, especially, are dying.

While this is a complex issue, the stories we heard compelled Presiding Bishop Eaton to write a letter to the administration. She and all 65 bishops signed this letter requesting the United States government to restore the millions of dollars in funding promised to Augusta Victoria Hospital in East Jerusalem that primarily serves Palestinian Christians. This hospital, owned and operated by the Lutheran World Federation and is supported by the ELCA, is vital as it is the only medical center there. (Read the letter here:

www.elca.org/News-and-Events/8009)

In the first story above, I don't know what happened to this woman or the other people gathered that day in Senegal. I hope all of them are still living and still receiving care. In the second instance, I do know that many of the people treated at AVH are Christian Palestinians whose only access to healthcare is through AVH. And I do know this: As people of God, we hold all people sacred. As people who believe in the priesthood of all believers, we know that the staff and volunteers at these health centers are doing holy work. As people who believe in Jesus, we know that Jesus is in the midst of those that others have rejected. As people of the cross, we know that in the midst of suffering, Jesus is there.

You see, as Lutherans, we take seriously what justification by grace alone means: Salvation is not the process or goal of life but rather its foundation. Because we are claimed by God through no merit of our own, we are free to live and love and serve our neighbor – whether it is the neighbor next door or the neighbor in Senegal or Jerusalem.

Way back in the sixteenth century, Martin Luther wrote about establishing a common chest for the sake of the poor in the city of Leisnig, "Those individuals in our parish ... who are impoverished ... shall receive each week on Sunday ... support from our common chest ... This is to be done out of Christian love, to the honor and praise of God, so that their lives and health may be preserved." (LW, 45:189)

I read Martin Luther's words and they remind me that we are called out into the world – not because we have to but because of what God has claimed for us. I am so thankful that as we remember the Reformation on October 31 we continue in the footsteps of Martin Luther and the other reformers: Trusting in God's grace through Jesus, we turn to serve and love our neighbor – whoever or wherever that neighbor is.

Thank you for the love and care you are showing to your neighbors – both near and far – as we see the face of Jesus in all.

In God's Peace and Joy,
Bishop-Shelley Bryan Wee

Worship

Readings for November

November 3 All Saints Sunday

Daniel 7:1-3,15-18
Psalm 149
Ephesians 1:11-23
Luke 6:20-31

November 10 22nd Sunday after Pentecost Ordinary Time

Job 19:23-27a
Psalm 17:1-9
2 Thessalonians 2:1-5, 13-17
Luke 20:27-38

November 17 23rd Sunday after Pentecost Ordinary Time

Malachi 4:1-2a
Psalm 98
2 Thessalonians 3:6-13
Luke 21:5-19

November 24 Christ the King

Jeremiah 23:1-6
Psalm 46
Colossians 1:11-20
Luke 23:33-43



LUTHER MEMORIAL
lutheran church

Actively Sharing
Christ's Love
in Community.

Worship servers are scheduled on the 15th of the preceding month by Pastor Julie. If you have dates when you do NOT wish to be scheduled, please let her or the office know before the 15th. If there is a scheduling conflict, please find a substitute from among the additional names on the schedule.

	11/3	11/10	11/17	11/24
Assisting Minister	Steve Olson	Cathy Fransson	Laura Harris-Ferree	Andrew Wesly
Lector	Andrew Wesly	Shirley Teuber-Goins	Cathy Fransson	Julie Moe
Acolyte	Jed Ter Hark	Joshua Lingappaiah	Lillian Long	Stacie Jamieson
Communion/Altar	Diane MacKechnie and Karen Senior			
Greeters and Ushers	Lollie Ellingson Lynny Greenup	Mary Hinderliter & Eric Zoeckler	Bill & Laurie Meade	Ardene Adams & Cathy Fransson
Song Leader	Leia Smith	Kyle Gough	Julie Moe	Shirley Teuber-Goins
Musician	Chrade Younkin			
Closer	Bill Meade	Raj Lingappaiah	Donna Smith	Lollie Ellingson



November 2019

See our live calendar online for any changes or updates: www.luthermemorialseattle.com/calendar

Sunday	Monday	Tuesday	Wednesday	Thursday	Friday	Saturday
Actively Sharing Christ's Love in Community						
3 DST ends All Saints Sunday 9:30 Sunday Church School 9:30 First Sunday Faith Forum 10:30 Worship	4 6:30 Narcotics Anonymous <div style="border: 1px solid black; background-color: #e0f0ff; padding: 2px; text-align: center; margin-top: 5px;"><i>Pastor Julie's Sabbath</i></div>	5 10 Kaleidoscope Play & Learn 7:30 Seattle Photo Society	6 9:30 Seekers 7 NarAnon Family Group	7 1 Step-Study NarAnon Family Group	1	2
10 22nd Sunday after Pentecost Ordinary Time 9:15 Choir Rehearsal 9:30 Sunday Church School 9:30 Book Brigade 10:30 Worship	11 Veteran's Day CHURCH OFFICE CLOSED 6:30 Narcotics Anonymous <div style="border: 1px solid black; background-color: #e0f0ff; padding: 2px; text-align: center; margin-top: 5px;"><i>Pastor Julie's Sabbath</i></div>	12 10 Kaleidoscope Play & Learn 7:30 Seattle Photo Society	13 9:30 Seekers 7 NarAnon Family Group	14 1 Step-Study NarAnon Family Group 7 Broadview Garden Club	15	16
17 23rd Sunday after Pentecost Ordinary Time 9:15 Choir Rehearsal 9:30 Sunday Church School 10:30 Worship 11:30 Prayers for Healing	18 6:30 Narcotics Anonymous <div style="border: 1px solid black; background-color: #e0f0ff; padding: 2px; text-align: center; margin-top: 5px;"><i>Pastor Julie's Sabbath</i></div>	19 10 Kaleidoscope Play & Learn 6 Church Council	20 9:30 Seekers 7 NarAnon Family Group	21 1 Step-Study NarAnon Family Group	22	23
24 Christ the King 9:15 Choir Rehearsal 9:30 Sunday Church School 10:30 Worship	25 6:30 Narcotics Anonymous <div style="border: 1px solid black; background-color: #e0f0ff; padding: 2px; text-align: center; margin-top: 5px;"><i>Pastor Julie's Sabbath</i></div>	26 10 Kaleidoscope Play & Learn 7:30 Seattle Photo Society	27 9:30 Seekers 7 NarAnon Family Group	28 Thanksgiving Day CHURCH OFFICE CLOSED 1 Step-Study NarAnon Family Group	29 CHURCH OFFICE CLOSED	30