



# LUTHER MEMORIAL

## lutheran church

*Actively Sharing Christ's Love in Community*

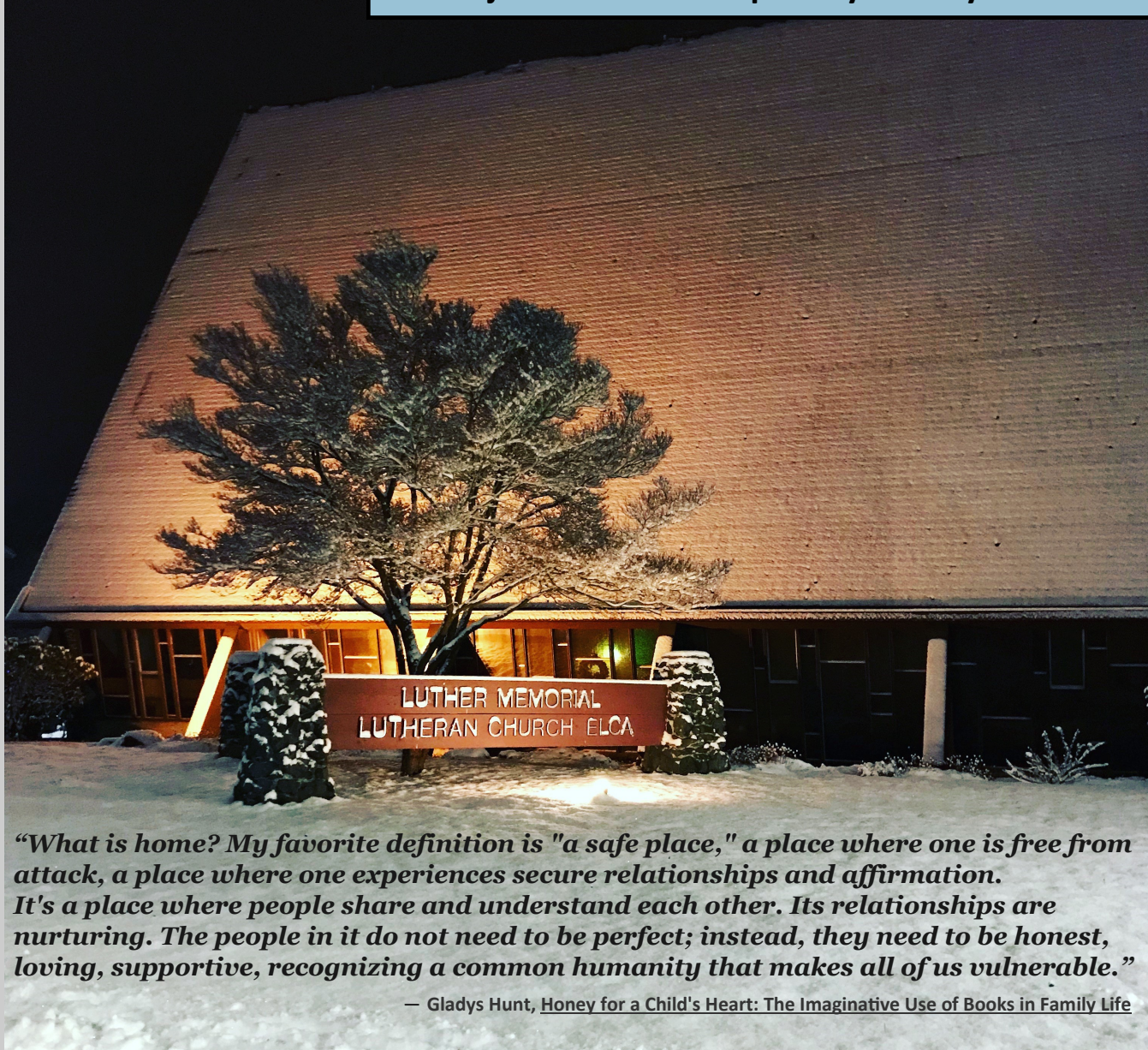
All are welcome!



# Messenger

December 2018

Come join us for worship every Sunday at 10:30 am!



*“What is home? My favorite definition is "a safe place," a place where one is free from attack, a place where one experiences secure relationships and affirmation. It's a place where people share and understand each other. Its relationships are nurturing. The people in it do not need to be perfect; instead, they need to be honest, loving, supportive, recognizing a common humanity that makes all of us vulnerable.”*

— Gladys Hunt, *Honey for a Child's Heart: The Imaginative Use of Books in Family Life*

THE LUTHER MEMORIAL MESSENGER is published by  
Luther Memorial Lutheran Church  
13047 Greenwood Avenue N, Seattle, WA 98133  
206.364.2510 | [www.luthermemoralseattle.com](http://www.luthermemoralseattle.com)  
[welcome@luthermemoralseattle.com](mailto:welcome@luthermemoralseattle.com)

Rev. Julie G. Hutson, Pastor | Vicar Laura Ferree, Intern  
David Horton, Director of Music and Worship Arts  
Raj Lingappaiah, Congregation Council President  
Katy Sarff, Bookkeeper  
Mary Chamberlin, Office Administrator

**December 15** is the deadline for articles in the January issue.

## PJ's Page

I'll be home for Christmas; you can plan on me....

Oh there's no place like home for the holidays....

Home.

It is a word that carries an enormous amount of weight. For some it evokes warm memories and for others it brings heartache and sadness. Like most things, it's likely that the idea of home evokes not just one or the other, but that our memories of home are a mixture of happiness and struggle.

This Advent season, we'll be worshiping, writing, singing, and waiting together in the theme of Coming Home. This theme was inspired largely by our awareness that this holiday season, 59 families are experiencing housing fragility. It may be that they are staying with family or sleeping in their car or staying in a shelter. But we look west from where we worship to see their homes. Still under construction. But getting there.

Mary and Joseph traveled to Bethlehem under similar circumstances. They had no place to rest at night and when the time came, as we recall, for her to be delivered, she did so in a barn, for there was no room in the inn or anywhere else.

I confess to you: I am getting impatient. I want the housing to be completed NOW! Every day I remember these families in my prayers and my heart breaks just a little bit. But looking west I can see homes taking shape, with kitchens and bathrooms and light fixtures and warmth.

I've shared before that I've moved over thirty times in my life. For me, home, then, is not a structure as much as it is a place where I go to be safe and accepted. It is a place where my heartache can be laid aside or opened up. It is a place where my joys and laughter can burst forth. It can also hold each ordinary moment.

Bruce and I live in a home that we have affectionately named The Magic Farmhouse. I don't know what it is about this actual structure, but I can tell that it has loved many people well in its 108 years. It reminds me of the best of what home is, this farmhouse in the middle of what's left of an apple orchard where Shoreline begins and Seattle ends. The irony is, that because of the expansion of the light rail, Shoreline has re-zoned this area and it will become multi-use. The owners of our home will certainly tear it down and turn it into something much more profitable. We will never have the chance to own it.

This has taught us something about home. That when we grasp a physical space too tightly, we are forgetting where our true home exists. It exists in the eyes of our beloveds. It exists in the community we build. It exists in the new things we learn when we pay attention. It exists in the God who created us and who is our true home. It is there, where we are loved, valued, and fully known.

In this season, may you know the peace that comes from the One born in a temporary dwelling, surrounded by animals....and by love.

*In this season we wish you and those you love deep joy and peace.*

*May the light of Christ shine in your hearts and throughout all of Creation in this and every season.*

*Pastor Julie and Bruce Hutson*

## Vicar's Voice

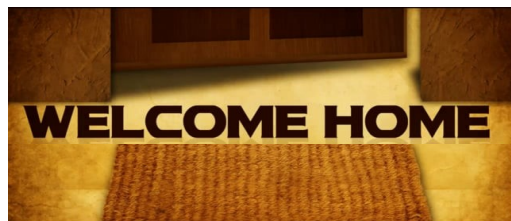
Coming home. What an emotionally charged phrase. Recently, I was getting my haircut and my barber asked me about my holiday plans which sent us into a conversation about going home. He shared with me that going home is such a tense and anxiety filled experience which he can only manage for a couple of days at a time. But we also discussed how there is no place like our homes and sleeping in our own beds. Clearly, we were talking about the physical structure of our homes and the material things that make up a home.

What does it mean to come home? Where is our home? I have had to ponder this question many times during the past 8 years as I have moved from place to place. It started when I first moved to college and was living away from home for the first time. Where and who was my home? Was I going home when I went back to my hometown for Christmas break or was I going home when I returned to school?

Once I graduated from college it was time to move once again for seminary. A new community and a new place to live so now, where is my home? Starting seminary, I knew that Columbus, OH would only be my temporary home as internship was only two years away. It is rather difficult to create a home when you know it will be so temporary. Soon after feeling like Columbus finally became my home it was time to make the trek to Seattle and once again create home.

I think it is safe to say over the past couple of years I have done my fair share of moving and creating homes. But how do we decide where our home is or who is home? In each of these places I have lived the material shelter I lived in was not what made that place home for me. Each place felt like home because of the community that I was a part of in each of those places. Each place began to feel like home when I had a community of support and no longer felt like just another face on the street.

Coming home can feel so hard and anxiety ridden for so many people. But you all are home to me. A community of support and a cloud of witnesses. Coming home is so much easier when the feeling of love and support is undeniable. That's where I hope I can welcome you home to the body of Christ. To a place where love knows no bounds. A home that is beyond structures. A home that is eternal. So church, welcome home this holiday season. I hope that in the midst of the holiday season with the anxiety and homecomings that you know your home and identity in Jesus are always known, valued, and loved.



### SABBATH KEEPING

You may have noticed that both Pastor Julie and Vicar Laura keep a day of Sabbath every Monday. This is a day intended for deep and restorative time...for renewal, for rest, and for rejuvenation. If you send Pastor Julie or Vicar Laura an email, message, or text that day, it is likely you will not receive and should not expect an immediate response. If you have an emergency requiring pastoral care, you are encouraged to call the office during office hours (9am-2pm) who will know how to reach them or to call 206-948-5068 and leave a voicemail, which will be checked and returned promptly. Your clergy staff is appreciative of your care for these guidelines.

## Director of Music and Worship Arts



*The Angel Gabriel*, oil painting by Shannon Knight  
<https://shannonknight.com/>

‘For instance, we know that when these bodies of ours are taken down like tents and folded away, they will be replaced by resurrection bodies in heaven—God-made, not handmade—and we’ll never have to relocate our “tents” again. Sometimes we can hardly wait to move—and so we cry out in frustration. Compared to what’s coming, living conditions around here seem like a stopover in an unfurnished shack, and we’re tired of it! We’ve been given a glimpse of the real thing, our true home, our resurrection bodies! The Spirit of God whets our appetite by giving us a taste of what’s ahead. He puts a little of heaven in our hearts so that we’ll never settle for less.’

*2 Corinthians 5:1-5, The Message Translation*

Home has meant many different things to me over the years. My parents divorced when I was considerably young. This meant that we had to move from my childhood home at an early age. My mother raised my two other brothers and me almost entirely on her own on a teacher’s salary. This notably honorable career sadly had a limited income and kept us from purchasing a home in the ever-increasing housing market in Orange County, California. I remember needing to move about every three to four years upon the landlord raising the rent on the home we lived in at the time. Over the eighteen years, before I left for college, I moved seven different times. Needless to say, I got really good at packing and adapting to different neighborhoods and communities. However, I learned quickly that home meant where my family was which included our dog and three cats. Over the years, Mike and I have made a home in Eugene, Oregon, Saint Paul, Minnesota, and now Seattle, Washington. Home for me means family and a place to take your shoes off and get comfortable. Home is where we have a family table to share a meal, a neighborhood to walk our dog, Daisy, and a welcoming place to host family and friends for movies, book club, and board games. This idea of home is, of course, a luxury and privilege; one that must never be taken for granted.

With the ever-expanding Seattle housing crisis, thousands of us don’t have a place to call home. It’s during the holiday season that our sense of home increases and we long for warmth, light, and a welcoming community. Thousands are battling job loss, addiction, mental illness, or abandonment of family. Without a home, everything is a possible imposition. One burden of homelessness is this: you’re always a stranger, counting on someone’s good graces. The biblical narrative begins and ends with home. From the Garden of Eden to the New Jerusalem we are hardwired for place and for permanence, rest and refuge, presence and

protection. We long for home because hospitality was our first gift of grace and it will be our last. If the Bible testifies to the comfort of home, the bulk of the narrative witness to the grief of its loss. "Displacement is at the heart of God's judgment," writes Bartholomew, who suggests the biblical drama can be divided into three acts: placement, displacement, and reimplacement. Author Jen Pollock Michel explains in her book, *Keeping Place: Reflections on the Meaning of Home*, to help each of us recognize our own lostness, we have to lean in to hear the story of home. Home is a human place. Inherently, each of us, the children of God, is familiar with the sound of God's welcome-and God is delighted in our return home. To thrive, humans need the idea of home. "Uprooted trees can be transplanted, but this isn't to say they become indigenous species." - Jen Pollock Michel

Loving God, in your house there is room for everyone.  
Help us as we strive for a world where everyone has a home that truly meets their needs.  
Give us the grace to welcome strangers and refugees.  
Give us the insight to see where inequality hurts.  
Fill us with courage to do our part.  
Save us from being overwhelmed by the scale of the housing crisis,  
and show us, O Lord, where to begin.  
Amen.

*(A prayer from a service for Homelessness, Wild Goose Publishers)*



My brothers and I, Christmas 1993

(Left to right; youngest to oldest): David, Mark, and Adam

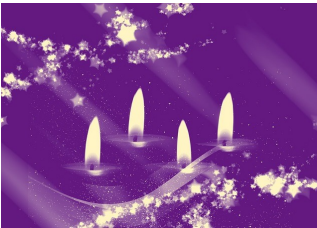
## Book Brigade

The Book Brigade will meet on December 9th at 9:30am.  
Bring your choice of Book to talk about. See you then!

# You are invited...

## Coming Home: Advent and Christmas

During the season of Advent and Christmas, we as a congregation will be exploring what it means to come home. What does home mean to you? What does it mean to find a home within our worshipping community? And finally, as we prepare to fill fifty-nine affordable housing units next door, how do we help others discover a sense of home? Through word and song, we will embark on this journey together, bringing the hope of light to ourselves and to others.



### ***Who's Coming to Our House? A Youth Advent Play*** | Sunday, December 16 during 10:30 AM Worship

During our Sunday worship, the youth of LMLC with costumes and songs will tell the story of how the Angel Gabriel not only visit Mary and Joseph but the animals at the Bethlehem stable. This brief drama, written by David Horton, will explore what it means to create a warm and welcoming place for the birth of Jesus!

### **Soup & Song and Community Nativity Display** | Sunday, December 16 at 11:30 AM

A long-standing tradition at LMLC, we will share a community meal together while singing "Call-Out-Style" Christmas Carols. This year, bring a family nativity set to share with the community! We will have two display tables in our sanctuary for you to place a treasured nativity set. Provide a brief description to accompany your nativity set.

### **Longest Night** | Friday, December 21 at 7:00 PM

*"Come, God of compassion, to be with all  
whose loneliness  
makes every night  
longer than the one before..."*

-Thom M Shuman-

The longest night of the year occurs at the Winter solstice, Friday, December 21 with just a little over 9-hours of sunlight in the Pacific Northwest. On this night we will sing songs, reflect on Scripture, light candles, and pray together as a community. Special music provided by our LMLC Choir.

### **Christmas Eve and Christmas** | Monday, December 24 at 5:00 PM and 9:00 PM

Come celebrate the eve of the birth of our Savior, Jesus the Christ. We will sing carols, light candles, and read the familiar stories of the nativity. Special music provided by community artists and our very own LMLC Choir.



### **I Hate Music!** | Sunday, March 3 at 3:00 PM

Music by Ned Rorem and Leonard Bernstein

Our next Fine Arts concert at LMLC will host mezzo-soprano, Erin Calata and include art songs and piano solos by two renowned 20th-century American composers. Suggested donation of \$10. This donation will go to our Fine Arts fund which helps bring in professional artists and ensembles to our community.

# LMLC News and Events

## THANK YOU

Thank you to everyone who contributed and purchased the wonderful crafts at the bazaar! We took in over \$600 which will be put towards the 2019 Day Camp with Camp Lutherhaven—"Adventure Awaits"! This will be an exciting time the end of June 2019 for our LMLC Youth and the Youth in our neighborhood!

## SACK LUNCHES

During the winter months warm, clean, new socks are an especially welcome addition to our sack lunch program. Hand warmers ("Hot Hands" etc) and Chap Stick/lip balm, along with small packages of tissues are also helpful. These donations can be left in Katie's Parish on the cabinets with the mailboxes. Thank you for caring!



## Help Deck the Halls This Christmas!

It happens every year, on or about January 10<sup>th</sup>. The caretaker removes the last of the leftover poinsettias from the sanctuary, their leaves (if there are any left) drooping toward the ground.

This year, we will decorate the sanctuary as usual, and if you'd like, you CAN take a poinsettia home!

However, we will also, under the care of Julie Moe and others, enjoy additional festive decorations.

As usual, your donation to our **seasonal beauty** can be offered in memory or honor of someone by filling out the form below, at the Welcome Center, or online, by the December 16<sup>th</sup> deadline.

All dedications will be listed in the bulletins on December 23, Christmas Eve, December 30<sup>th</sup> and in the January Messenger.

---

## Seasonal Beauty

Your Name: \_\_\_\_\_

I wish to donate: \_\_\_\_\_

In memory/honor of: \_\_\_\_\_  
In memory/honor of: \_\_\_\_\_  
In memory/honor of: \_\_\_\_\_  
In memory/honor of: \_\_\_\_\_

Please circle payment form:    *Cash*    *Check*    *Online*

Checks can be made payable to LMLC with *Seasonal Beauty* in the memo line, cash can be put in an envelope similarly marked.

Please place completed form along with check or cash in the offering plate on Sunday or turned in at the church office.

Deadline is December 16.

# Faith and Everyday Life - LCN



## Faith and Everyday Life

"Somewhere in the din of it all  
 Beneath the rubble of our discontent  
 There lies in the heart of the world  
 In the soul of each of us—  
 A tender village  
 How shall we remember?"      Author unknown

I think about the village that lies in the soul of each of us as I read 1 John 4: 7-12. I am heartened. John reminds us: "God lives in us and his love is perfected in us." I'm also enlivened by the idea of lying still as the village sometimes must.

For so many of us this season, we struggle to love as God would have us love and to operate out of the village within that can act as manger for our God. This is the central message of Advent, isn't it? We prepare ourselves to greet God and to remember that He came into the world to baptize it. God confirms for us the grace of creation - so good, He chose to live in it with us.



And let's face it; it takes a village to love as we think God would have us. Love often looks strong and challenging; sometimes, tender and soft. It calls upon all parts of the created good - all parts of the village within - to see, know, name and serve our sisters and brothers. When we struggle in this season, it is good to take heart in the promise of Bethlehem.

Lying still, awaiting God.

Written by a staff member of Lutheran Counseling Network

*Lutheran Counseling Network is a nonprofit organization of dedicated professional psychotherapists providing services since 1981. All LCN counselors have a masters or doctoral degree. Our professional staff observes a strict ethical code of professional conduct.*

*LCN is an extension of the church's ministry to the community. We provide therapy for individuals, couples and families, addressing such areas as depression, anxiety, recovery from trauma, behavioral problems, parenting, sexuality and spirituality.*

*We charge a standard fee, and insurance companies may reimburse a portion of the fee. Many of our clients pay a subsidized fee adjusted according to family income. This is made possible by the generous donations of the churches we serve.*

### Mission Statement

*By providing psychotherapy to people in need and education for congregations and pastors, Lutheran Counseling Network is an instrument of God's grace which strengthens and brings healing to individuals, couples and families so that they might in turn be instruments of God's grace.*



# COMING HOME

## Advent & Christmas

December 2-23 at 10:30 AM  
Sunday Advent Worship

Sunday, December 16 at 10:30 AM  
Who's Coming to Our House?  
A Youth Advent Play

Sunday, December 16 at 11:30 AM  
Soup and Song  
Community Meal and Christmas Carols

Friday, December 21 at 7:00 PM  
Longest Night

Monday, December 24 Christmas Eve Worship  
5:00 PM and 9:00 PM

Sunday, December 30 at 10:30 AM  
Festival of Carols



RECONCILING *in* CHRIST



# ELCA Prayer Ventures



**Evangelical Lutheran Church in America**

God's work. Our hands.

**1 World AIDS Day** Today we remember and pray for people who have died from AIDS-related illnesses and people who are living with HIV; we give thanks for the progress made in prevention, treatment and care, and ask for an awareness of what still needs to be done; and we ask God to help our church continue in its work with partners and organizations around the world to eradicate AIDS and support people who live with HIV.

**2 First Sunday of Advent** Give thanks and praise for God's promises fulfilled in the gift of Jesus Christ, a gift for all humanity that changed everything and continues to stir faith, newness of spirit, peace, compassion and justice in the world.

**3** Pray for the recovery and well-being of those affected by recent hurricanes, flooding, wildfires and other natural disasters, especially for families, people living in poverty, older adults and communities with scarce resources.

**4** Ask for help in knowing and following God's ways and paths – paths that are mercy, love and faithfulness.

**5** Give thanks for the generous support of ELCA members and congregations in response to *The Campaign for the ELCA* and its priorities: congregations, leadership, hunger and poverty, and the global church. Pray our commitments and generosity continue for supporting and investing in the future of this church, deepening our relationships, and expanding existing and new ministries that serve our neighbors and communities here and around the world.

**6** Give thanks for Lutheran Services in America, an alliance of the ELCA and over 300 health and human services organizations serving the complex, diverse needs of more than 6 million people each year in the United States and the Caribbean.

**7** Lighting and reflecting on the glow of candles in Advent wreaths is an enduring tradition for many people around the world that marks our remembrance of Jesus' birth and the gift of eternal life. Give thanks to God for sending the true light and hope of Christ into the world and into our lives.

**8** Thank God for the joy, encouragement and strength of faith we receive from one another gathered in our congregations – communities of faith that send us into the world equipped to care for our neighbor and to share the good news of Jesus Christ.

**9** Praise God for the good news of Jesus Christ, our savior who

*These petitions are offered as guides to prayer for the global, social and outreach ministries of the church. Thank you for your continued prayers for the life and mission of this church.*

comes to us in the wilderness and darkness of the world to bring light, truth and salvation for all.

**10** Over 68 million people around the world have been displaced from their homes by war, violence, disasters and persecution. Pray for the safety, care and well-being of people who have fled or been forced from their homes and countries, that they have resources to meet their daily needs and find welcoming, supportive communities and congregations to help them find stability and pursue their hopes and dreams.

**11** Remember in prayer ELCA missionaries accompanying our companions in Estonia, Denmark, Norway, Poland, Sweden and Switzerland; pray the Holy Spirit will inspire and sustain their faith and work of sharing the gospel, growing the church and serving our neighbor.

**12** In this season of buying and sharing gifts, pray God will help us rethink – for the sake of the world – our traditions, habits and generosity through the influence, opportunities and far-reaching impacts of ELCA World Hunger and ELCA Good Gifts.

**13** Pray for neighboring congregations and ministries, pastors, synod staff, ecumenical partners and leaders who work together with us to share the gospel, serve our neighbors and communities and grow the church.

**14** Ask God to help us shape and renew our congregations to be life-giving and imaginative places for people of all ages, abilities, backgrounds and circumstances to gather around God's word and the sacraments, practice hospitality, build relationships and care for the needs of our neighbor – friend or stranger, member or not.

**15** Pray for the new Lutheran Men in Mission Disaster Relief Effort, which organizes men to share their skills, experiences and resources to work alongside Lutheran Disaster Response, Lutheran social services, local agencies, communities, individuals and families to repair and rebuild homes damaged by natural disasters.

**16** Pray the Holy Spirit will strengthen and embolden us to invite others to have faith in the Messiah, Jesus Christ, and to be compelling witnesses to God's ways, truth, justice and mercy in the world.

**17** Remember during the holidays people who are in prisons, jails, correctional facilities and detention centers; pray we are active in connecting them with caring communities of faith, their families and children, and resources for rebuilding their

*This resource may be copied and shared among members and friends of the congregations of the Evangelical Lutheran Church in America. Contact [info@elca.org](mailto:info@elca.org) for additional information. Evangelical Lutheran Church in America, 8765 West Higgins Road, Chicago, IL 60631. Telephone: 800-638-3522, ext. 2458.*

hope and lives; pray our compassion is stirred by the Spirit that we freely share with those who are imprisoned the good news of forgiveness, hope and new life we have in Jesus Christ – the gift of God’s love for all people.

**18** Ask that the Holy Spirit guide us in being attentive and supportive of pastors, leaders and church staff during Advent and Christmas, that their faith will be strengthened, their needs cared for, and that they will find time to reflect on the light and joy of Jesus Christ in their own lives.

**19** Pray for the safety and protection of all who are traveling during the holidays.

**20** Remember in prayer first responders, firefighters, doctors and nurses, military, law enforcement and care providers working the holidays for our safety and well-being; pray for people who serve the public in retail stores, restaurants, and the hospitality and travel industries; and pray they all find opportunities for renewal and time with the family, friends and communities that enrich their lives and faith.

**21** During the past year, the ELCA and the Episcopal Church have been committed to prayer, fasting and advocacy addressing cuts to public programs that are vital to hungry people who are living in poverty. Remember to continue praying for these concerns, our leaders and people in need.

**22** Pray that during our congregational activities, worship, gift sharing and community meals we remember to reach out and involve individuals and families confined to home or care facilities, without family or friends, homeless or forgotten.

**23** God’s presence and the ways in which the Holy Spirit works in our lives can catch us by surprise and unprepared just as it did pregnant Elizabeth and Mary. Ask God to open our hearts, minds and senses to the amazing, subtle and life-changing things that God is accomplishing in the world, often through us.

**24 Christmas Eve** Pray we are childlike in our faith and excitement for the birth of Christ – a gift of light that no darkness can overcome, a gift for us that is full of life, grace and truth.

**25 Christmas Day** Glory to God in the highest! Give thanks and praise to God for the birth of Jesus Christ, the son of God, who lived among us full of grace and truth, that God’s love for humankind might be clear, tangible and revealed in ways that speak to our human needs and senses – then and now.

**26** Pray we exercise daily unbiased generosity with all the gifts, resources and abilities God has entrusted to our care and use.

**27** Talk to students who are on break, recognize their presence and affirm the gifts they share with the body of Christ; pray they are renewed during their break and J-term experiences, and assure them they are not forgotten and are remembered in our personal prayers as well as those of the congregation.

**28** Just as Mary and Elizabeth gave testimony to what God was doing in their lives for the sake of the world, pray that we, too, are articulate about what we trust God is doing in our lives and the world – during the ups, downs and times that puzzle us.

**29** Ask that the Holy Spirit guide and inspire our church as it reflects on and makes plans for the present and future, seeking to be ever faithful, centered in the gospel, wise and nimble in doing God’s work in the world as it shifts and changes.

**30** We gather in congregations to worship God, learn, grow in faith and care for and equip one another for living as followers of Christ in the world. Pray we each contribute to the vitality of our faith community, strive for unity, and help each other move beyond the walls of our buildings and into our communities and world with a fervor to serve our neighbor and share the gospel.

**31** A new year is at hand! Pray we are not swept into it with anger, vindictiveness, division, apathy or fear, but rather with hearts open to the word of Christ dwelling in us and lives that shine brightly with compassion, kindness, humility, forgiveness, patience and an eagerness to work together for unity.



## Synod News

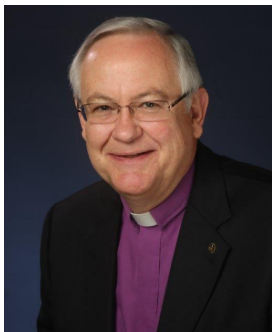
# The Spirit

Volume 35, Number 12

December 2018

## God knows how to disarm the world

by the Rev. Kirby Unti - Bishop, NWWA Synod



Friends, we are living in some disturbing times where violence, bullying, threats and hostility abound. The world can be downright mean. No one is spared - not even mothers and children.

How is one to respond in times like these? Do you just duck and seek cover? Do you remain silent? Do confront those who are the source?

What many have chosen to do is to up their security systems. It is one of America's fastest growing industries. Others choose to literally arm themselves. While still others practice what is called situational awareness. It is about being alert to your surroundings and trying to take the necessary precautions.

On a recent trip to Chicago I heard a wonderful story from one of our Lutheran Bishops about Munib Younan, Bishop Emeritus of the Evangelical Lutheran Church in Jordan and the Holy Land. (He served as bishop from January 1998 to January 2018.)

My colleague was traveling with Munib when they crossed through a Check Point between Palestine and Israel. They were met by a security guard armed with an assault rifle who was anything but kind to Munib requiring him to get out of the car before he could proceed.

What Munib did is unimaginable to me. During the interrogation Munib said to the guard, "I don't think you like your job." Obviously, this comment took the guard by surprise. It didn't stop Munib. He asked the guard about his family and discovered he had a girlfriend. Munib increased the level of empathy for the guard's difficult position. Before long the guard put down his assault rifle and wanted to know who this man was.

Munib Younan is one of the most disarming people you will ever meet. He feels so deeply that he has been freed in Christ that he experiences very little fear in what for many is a very frightening place in the world. Everywhere he travels, Munib engages people with this same disarming charm - confronting hostility by revealing the fear that lies behind it.

When I grow up I want to be like him.

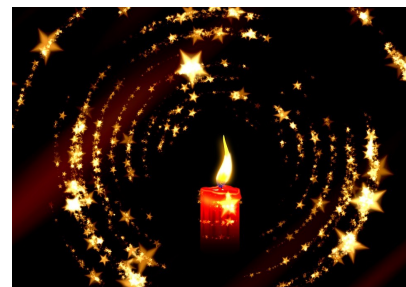
We are entering the Advent Season and Christmas. It is a time when we prepare ourselves to worship the Prince of Peace who was born in the same land as Munib. How brilliant of God to enter the world as a baby.

I know of no power greater than that of newborn. A newborn can quickly take over an entire household. They have the power to make macho men break into tears. They attract admiring looks wherever they go, unleashing a power of endearment that is hard to resist.

Yes, our God knows how to disarm the world. This God baby grew up teaching others to turn the other cheek. This baby who became an adult stood up to the likes of Herod and Pilate without batting an eye.

Yes, this Jesus, the Prince of Peace, has come into the world to disarm it. To disarm the hostility and meanness. To create a world where the stranger is welcomed, and all are accepted. This Jesus has come to face the fear of the world and replace it with peace.

Might this Season indeed be a season where each day we pray more fervently: Come Lord Jesus!



# Community News

## HOUSING UPDATE

December is a significant month in the life of Compass Broadview as applications will go live online on December 10<sup>th</sup>. Those applications will be found at [www.compasshousingalliance.org](http://www.compasshousingalliance.org). Interested parties should fill them out as soon as possible, as qualified applicants will be accepted on a first come, first served basis.

Thirty of the units are designated for individuals or families earning at or below 30% of the King County Area Median Income. Twenty nine units are designated for individuals or families earning at or below 50% of the King County AMI.

Eighteen of the units are set aside for families exiting homelessness. These units are referred through the YWCA Rapid Rehousing Program. Eleven of the units are set aside for households with a disabled member. These units are referred through the Department of Social and Health Services.

## REMODEL UPDATE

The former Fireside and Luther rooms have been combined to create one large room that will serve as a community gathering space/fellowship hall, complete with a brand new kitchen. The fireplace has been removed and the space will easily accommodate the needs of this community of faith as we gather!

Work will also begin constructing a storage space in the narthex, in the northwest corner.

In addition, new flooring is being installed in Katie's Parish and a remodel is turning the former nursery into a dedicated Music and Worship Arts office.

## REMINDER ABOUT SPACE USE at LMLC

There are many groups both in the life of this congregation and in the wider community, who utilize space in this building. It can never be assumed that a space is vacant and available for meeting or use without first clearing it through Mary Chamberlin in the office. In Mary's role as Facilities Use Coordinator, she makes sure that the space and equipment needed are available at the time requested, provides room set up if needed, and ensures access to the building is granted.

Before scheduling a meeting or event of any kind, there are two things that will make the process easier: Go to the live calendar on the web site, [www.luthermemoralseattle.com](http://www.luthermemoralseattle.com) and check for space availability; fill out room request forms, also available online, for your meeting or event. *If you are a ministry at LMLC: Committee, Bible Study, Choir, Quilters, etc...you don't need to fill out the forms, but you DO need to schedule your event through Mary to be sure the scheduling works.*

Questions? Give Mary Chamberlin in the office a call at 206-364-2510 or email her at [office@luthermemoralseattle.com](mailto:office@luthermemoralseattle.com)



Come join your LMLC family for a trip to Holden Village in summer 2019! We have tentatively set aside the following dates for our trip: **Sunday, July 7 through Friday, July 12.**

Although July is still several months away, group reservations for summer 2019 begin as early as December 1 (and dates fill up fast!). If you are interested in attending, please contact Colleen Lingappaiah ([Colleen\\_and\\_Raj@hotmail.com](mailto:Colleen_and_Raj@hotmail.com)).

Holden Village reservation materials are available at the Welcome Center in the Narthex. Your completed paperwork, as well as one night's deposit made out to *Luther Memorial Lutheran Church* (\$76/night for adults, \$56/night for children ages 6 - 17, children ages 0 - 5 are FREE), are due to Colleen no later than **Sunday, December 30**. For more information, feel free to ask Colleen, review the information provided with the reservation materials, or go to [www.holdenvillage.org](http://www.holdenvillage.org).

## Financial Picture

**New ways to give financially to Luther Memorial** | Your Stewardship and Financial Teams have recently added new ways to make it easier to make financial gifts to LMLC! Luther Memorial welcomes your financial gifts through any method you choose to give. Electronic and traditional givers accustomed to texting can now give through Give+Text. Make one-time or recurring offerings by simply sending a text of the dollar amount to our secure account at 206-929-4108. It's a convenient solution when you can't attend services or don't have cash or checks with you. We thank you and all givers for supporting our mission.

For those that do not want to text, but still would like to give by credit or debit card - you can visit our online giving page directly at [www.luthermemoralseattle.com/onlinegiving](http://www.luthermemoralseattle.com/onlinegiving), or find us on the GivePlusMobile App on your smartphone.

Lastly, we can now offer the ability to "swipe" a credit or debit card through a secure reader for financial gifts at special events. This can be a helpful way to give to our Seasonal Beauty efforts, or to finish out your 2018 Pledge. Katy will be available for any financial questions or gifts at Soup and Song, after worship, on December 16th. Thank you for supporting the mission and ministries here at Luther Memorial!

### October 2018 Financial Picture

**LMLC 2018 Full Year Expenses:**

**\$192,105**

**Contributions Needed per week :**

**\$3,694.33**

#### October Contributions Received:

**October 7            \$7,690.10**

**October 21            \$975.00**

**October 14           \$8,488.41**

**October 28            \$3,165.41**

#### October Budget Fund Contribution Designations

<u>Fund</u>	<u>Amount</u>
Offerings and Tithes	\$12,187.64
Gifts other than Offerings	\$1,708.15
Room Use <i>(Room Use, Damage Deposits, and Facilities Offset Fees)</i>	\$180.00
	<b>\$14,075.79</b>

**General Fund Total Contributions:**

**9**

**Needed: \$14,777.32    Difference: -\$701.53**

#### October Off-Budget Fund Contribution Designations

<u>Fund</u>	<u>Amount</u>
Feast with Friends—Fundraiser 2018	\$6,163.13
Music & Art Ministry	\$20.00
Intern	\$40.00
Pet Portraits—Posado's No-Kill Shelter	\$20.00

**Designated Fund Total Contributions: \$6,243.13**

***Financial Notes from the Treasurer: Thank you to everyone that has completed and returned the 2019 Intent of Giving Cards. If you have not, there are blank cards on the desk in the Narthex. This information is crucial to helping to budget and steward your gifts to the mission and ministry of Luther Memorial. The 2019 Budget is currently in progress, and will be available at the Annual Meeting in January. If you are interested in enrolling in Simply Giving automatic bank drafts, please pick up a blank form on the table in front of the office, or email [finance@luthermemoralseattle.com](mailto:finance@luthermemoralseattle.com)***

Worship servers are scheduled on the 15th of the preceding month by Pastor Julie. If you have dates when you do NOT wish to be scheduled, please let her or the office know before the 15th. If there is a scheduling conflict, please find a substitute from among the additional names on the schedule.

	12/2	12/9	12/16	12/23	12/24—5pm	12/24—9pm	12/30
<b>Assisting Minister</b>	Vicar Laura	Steve Olson	Vicar Laura	Katy Sarff	Vicar Laura	Vicar Laura	n/a
<b>Lector</b>	Julie Moe	Donna Smith	Shirley Teuber-Goins	Cathy Fransson	Donna Smith	Julie Moe	Donna Smith Shirley Teuber-Goins Gordon Trombley
<b>Acolyte</b>	Lillian Long	Stacie Jamieson	n/a	Joshua Lingappaiah	Donna Smith	Payton Johnson	Jed TerHark
<b>Communion &amp; Altar</b>	Laurie Meade						
<b>Greeters and Ushers</b>	Mary Hinderliter Eric Zoeckler	Lollie Ellingson Lynne Greenup	Kate Harris Bruce Hutson	Zach Johnson Gordon Trombley	Kate Harris Bruce Hutson	Bill & Laurie Meade	Donna Smith Gordon Trombley
<b>Song Leader</b>	Vicki Cook	Julie Moe	Katy Sarff	Shirley Teuber-Goins	Mike Engh Katie Skovolt	Julie Moe	n/a
<b>Children's Time</b>	Vicar Laura	Pastor Julie	n/a	Pastor Julie	Vicar Laura	n/a	n/a
<b>Closer</b>	Bruce Hutson	Dave TerHark	Gordon Trombley	Raj Lingappaiah	Donna Smith	Gordon Trombley	Raj Lingappaiah
<b>Musician</b>	David Horton						

## Readings for December

<b>December 2</b>	<b>December 9</b>	<b>December 16</b>	<b>December 23</b>	<b>December 30</b>
<b>Advent I</b>	<b>Advent II</b>	<b>Advent III</b>	<b>Advent IV</b>	<b>Christmas I</b>
Jeremiah 33:14-16 Psalm 25:1-10 1 Thessalonians 3:9-13 Luke 21:25-36	Malachi 3:1-4 Luke 1:68-79 Philippians 1:3-11 Luke 3:1-6	Zephaniah 3:14-20 Isaiah 12:2-6 Philippians 4:4-7 Luke 3:7-18	Micah 5:2-5a Luke 1:46b-55 Hebrews 10:5-10 Luke 1:39-55	1 Samuel 2:18-20, 26 Psalm 148 Colossians 3:12-17 Luke 2:41-52

## Happy December Birthdays!

4	<b>Jonathan Stever</b>	11	<b>Ben Smith</b>	20	<b>Taylor Martin</b>	24	<b>Leia Smith</b>	28	<b>Anne Jamieson</b>
5	<b>Shannon Stief</b>	16	<b>Stephanie Bloom</b>	20	<b>Megan Meade</b>	26	<b>Vanessa Elliott</b>	31	<b>Annamarie Norman</b>
6	<b>Bette Harris</b>	18	<b>James Gibbs</b>	21	<b>Michelle Sorrick</b>	27	<b>Calvin North</b>		<b>Erika Skovron</b>
7	<b>Dale Ebeling</b>		<b>Janice Sherlock</b>		<b>Karen Hoven</b>				<b>Pam Stever</b>

Sunday

Monday

Tuesday

Wednesday

Thursday

Friday

Saturday



<p><b>2 1 ADVENT</b>            9 Fruits of the Spirit Breakfast            9:15 First Sunday Faith Forum            9:15 Sunday Church School            10:00 Choir rehearsal            10:30 Worship  <b>12:30 Confirmation Class</b></p>		<p><b>3</b>  <i>Pastor Julie's Sabbath</i>  <i>Vicar Laura's Sabbath</i></p>	<p><b>4</b>            10 Kaleidoscope P&amp;L  <b>7 Church Council</b></p>	<p><b>5</b>            9:30 Seekers  <b>6 NarAnon Book Club</b>  <b>6:30 Choir Rehearsal</b>  <b>7 NarAnon</b></p>	<p><b>6</b>  <b>1 Step-Study Group</b></p>	<p><b>7</b></p>	<p><b>8</b>  <b>12 DNA NPE Event</b></p>
<p><b>9 2 ADVENT</b>            9 Fruits of the Spirit Breakfast            9:15 Sunday Church School            10:30 Worship</p>		<p><b>10</b>  <i>Pastor Julie's Sabbath</i>  <i>Vicar Laura's Sabbath</i></p>	<p><b>11</b>            10 Kaleidoscope P&amp;L</p>	<p><b>12</b>            9:30 Seekers  <b>6 NarAnon Book Club</b>  <b>7 NarAnon</b></p>	<p><b>13</b>  <b>1 Step-Study Group</b>  <b>7 Broadview Garden</b></p>	<p><b>14</b></p>	<p><b>15</b>            10 Dress Rehearsal</p>
<p><b>16 3 ADVENT</b>            9 Fruits of the Spirit Breakfast            9:15 Sunday Church School            9:30 Book Brigade            10:30 Worship</p>		<p><b>17</b>  <i>Pastor Julie's Sabbath</i>  <i>Vicar Laura's Sabbath</i></p>	<p><b>18</b>            10 Kaleidoscope P&amp;L</p>	<p><b>19</b>  <b>6 NarAnon Book Club</b>  <b>7 NarAnon</b></p>	<p><b>20</b>  <b>1 Step-Study Group</b></p>	<p><b>21</b>  <b>7 Longest Night Service</b></p>	<p><b>22</b></p>
<p><b>23 4 ADVENT</b>            9 Fruits of the Spirit Breakfast            9:15 Sunday Church School            10:30 Worship</p>		<p><b>24</b>  <b>5 Worship</b>  <b>9 Worship</b></p>	<p><b>25 CHRISTMAS DAY</b>            Church Office CLOSED</p>	<p><b>26</b>            Church Office CLOSED  <b>6 NarAnon Book Club</b>  <b>7 NarAnon</b></p>	<p><b>27</b>  <b>1 Step-Study Group</b></p>	<p><b>28</b></p>	<p><b>29</b></p>
<p><b>30 1 CHRISTMAS</b>            9 Fruits of the Spirit Breakfast            9:15 Sunday Church School            10:30 Worship</p>		<p><b>31</b>  <i>Pastor Julie's Sabbath</i>  <i>Vicar Laura's Sabbath</i></p>	<p><b>1/1/2019</b>  <b>HAPPY NEW YEAR!</b>            Church Office CLOSED</p>				