



# LUTHER MEMORIAL lutheran church



## Messenger

March 2013

*Actively Sharing Christ's Love in Community*

### In this issue:

<i>PJ's Page</i>	2
LMLC News and Events	3
<i>Vicar's View</i>	12
Synod News	14
ELCA Prayer Ventures	16
March Worship Leaders	18
March Readings and Celebrations	19
LMLC Calendar	20



**Ash Wednesday was February 13, which began our Lenten Journey of *Prayers around the Cross*. Throughout the season of Lent we will once again have Wednesday Simple Suppers at 5:30 pm, followed by Worship.**

**All are welcome at Luther Memorial!  
Join us Sundays at 10 am for worship as we  
*Actively Share Christ's Love in Community.***

**THE LUTHER MEMORIAL MESSENGER**, published monthly by Luther Memorial Lutheran Church  
13047 Greenwood Avenue N, Seattle, WA 98133  
206.364.2510 | [www.luthermemoralseattle.com](http://www.luthermemoralseattle.com)  
[office@luthermemoralseattle.com](mailto:office@luthermemoralseattle.com)  
**March 15** is the deadline for articles in the **April** issue.

**Rev. Julie G. Hutson**, Pastor  
**Bill Meade**, Congregation Council President  
**Paul Olsen**, Choir Director  
**Hartwig Eichberg**, Musician  
**Vicar Inge Williams**, Intern  
**Kate Nelson-Penland**, Office Administrator

## PJ's Page

*Beautiful music is the art of the prophets that can calm the agitations of the soul; it is one of the most magnificent and delightful presents God has given us.* - Martin Luther

*The one who sings, prays twice.*  
- St. Augustine

On Good Friday, we will gather to hear the story of the Passion of Jesus as it is told in



Scripture and Song. This is one of the most moving worship services of the church year and I hope you will come and be a part of it. Awilda tells me that this service is the reason that she sings.

Isn't it wonderful to consider how music is used to pass along the faith? My earliest memories of church include singing in Sunday School. Songs like *Jesus Loves Me* and *This Little Light of Mine* are still in our hymnal. Awilda tells that she made her singing debut in church, singing about being a sunbeam for Jesus! And our Mary Walters was recently sharing with our office staff songs that she remembers from her own days in Sunday School. I'll bet that each of us has stories like this to share!

I am grateful that we are getting acquainted with Evangelical Lutheran Worship, the hymnal of the ELCA. Red once again (although the official color is "New Cranberry") it is a compilation of many beloved older hymns and some new ones. Some of my favorite hymns though, are found in a hymnal published by Augsburg Fortress and the ELCA called *This Far By Faith*. The hymns in *TBF* are largely from the African American tradition. Growing up in the South,

I learned them from my friends who were mostly Southern Baptist. But they are powerful and power-filled in the way they tell the story.

The African American spiritual *I Want Jesus to Walk With Me*, is one of those songs that is significant to me in my faith journey. I think it is especially meaningful during this season of Lent. The verses describe times when the songwriters, J. Jefferson Cleveland and Nix, wanted Jesus to walk with them. In particular, they call on Jesus to walk with them during times of trouble and trial...

When my heart is almost breaking...

When my head is bowed in sorrow...

Lord, walk with me.

I wonder if we can name other times, and in so doing, write other verses about when it is that we wish Jesus to walk with us.

When I'm fearful, Lord, walk with me. When I'm fearful, Lord, walk with me. When my soul is overcome, Lord, I want Jesus to walk with me.

Well, I'm no songwriter, but I can surely come to God with my deepest longings and prayers. We all can. That is the great gift of prayer... whether we speak them, whether we pour them out before God, whether they are silent, or whether they are sung.

May Jesus walk with you during this and every season...

In peace and prayer,

Pastor John Horton

## LMLC News and Events

### From Pastor Julie Re: Nominations for Bishop

Information has been available to you for several months about the process for nominating and electing the next Bishop of the Northwest Washington Synod.

To my great surprise, my name has been placed in nomination for Bishop, among many other names. I want to assure you that I have no desire or intention to leave my call as your pastor. But I also wish to trust the Holy Spirit's movement in my life and in the church.

Please keep our synod in your prayers as we prepare for the Bishop's election at the Synod Assembly in May.

Faithfully,  
Pastor Julie+

### Greetings from Our Homebound Members!



Gladys Huebner wants you to know that she is doing well and hopes that she might be back in worship soon. She is displaying the angel that was in her Advent Cheer Basket from our Sunday School students. She says it still reminds her of the love of her congregation, all the way into February!

Bill and Winnie Ramstad are enjoying the view in the Adult Care Home just a few blocks from their home.

Here they are with Vicar Inge on a recent visit.



### LMLC Website - [www.luthermemorialsattle.com](http://www.luthermemorialsattle.com)

Have you checked out our website recently? You can find Sermons, Worship Leader Schedules, the Messenger, upcoming events, and many other things by going to the site. Also available to view is our interactive online calendar that we do all of our scheduling on! Please take a look when you can and as always, if you see anything in need or having comments or questions, please let the office know. (There is even a way to directly email the office from the Contact page!)

# LMLC News and Events

## First Sunday Faith Forum - Faith and Immigration Reform

On Sunday, March 3, we will meet at 9 am for the First Sunday Faith Forum. The presenter will be Diakonda Gurning, speaking on Faith and Immigration Reform. Diakonda is representing ILF (Indonesian Lutheran Fellowship), which is a Synodically Authorized Worshiping Community of our Synod. In its ministry, ILF walks with the Indonesian immigrant communities in their challenges living in this new land. ILF is organizing and advocating Christ's hospitality to all immigrants in the U.S. through the New Sanctuary Movement.

## Kathy Nelson Announces Her Retirement

After serving for many years as a musician at Luther Memorial, Kathy Nelson has announced that she is retiring, effective at once.

From Kathy - *I really want to focus on worshipping rather than leading worship now.*

Watch for an opportunity to honor Kathy... coming soon!



## The Rides of March

For many of our homeless neighbors, getting around the city is a challenge. During the month of March, we will be asking for donations of bus tickets or funds to purchase them. Tickets will be given to folks who need them, at a maximum of two tickets per person per day. Funds can be placed in the offering plate, designated for *Rides of March*, or brought to or mailed to the office during office hours.

## Comings and Goings

Luther Memorial welcomes Charles (Chuck) Fleury by Affirmation of Faith! Chuck is the owner of Chuck's Auto Body, in Ballard and is the beloved of longtime LMLC member Laura Steinmetz.

Sherianne Caldwell has transferred to Immanuel Lutheran Church, Seattle. We wish Sherianne God's richest blessings on her journey.

## Thank You from the LMLC Youth

Thanks to everyone for their support of the Shrove Tuesday Pancake Supper! Over \$200 was raised, and the youth will give at least ten percent of that to ministries of their choosing. It should be noted that the youth did *ALL* of the flipping of the flapjacks, and they were delicious!

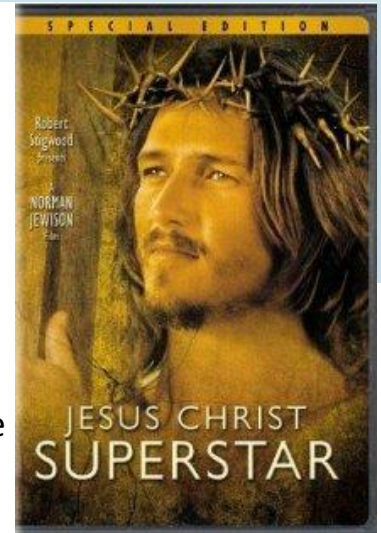
## LMLC News and Events

### Pizza and Pontius Pilate- Lenten Movie Night

On March 16 at 6 pm, we will have a movie and pizza night to watch the Oscar nominated, 1973 film adaptation of the Andrew Lloyd Weber and Tim Rice Rock Opera, *Jesus Christ Superstar*. The movie is rated G, and follows the Passion narrative through a rock-musical form. Feel free to even sing along! This viewing is for all ages, but if you have any questions regarding the content, please research it beforehand. Kate Nelson-Penland is coordinating the event, so if you have any questions or would like to help out, please contact her at the office. Kate grew up watching this musical every Lent with her family, and would like to share that tradition! Handouts will be available to guide us through the movie and how it pertains to scripture.

Following the movie, will be a discussion for those that are interested.

In order to get an accurate count for food, please let us know that you will attend by emailing the office or signing-up on the board next to the office by Wednesday, March 13.



### Seattle Lilla Spelmanslag In Concert

Sunday, March 10, the Seattle Lilla Spelmanslag will have a concert here at LMLC. This group of young musicians, ages 7 to 16, plays incredible Scandinavian folk music, which is fun for all ages! The concert will be a benefit for the group's tour in Sweden this summer. A Scandinavian Showcase, the concert will also feature LMLC member Kris Johansson and his group, Sprida Ut,

sharing tunes on the nyckelharpa, the Swedish key fiddle, and Peter Michaelsen and Anika Anderson on the Norwegian hardanger fiddle.

The Lilla Spelmanslag, which rehearses at LMLC, has been working hard for the last four years, building repertoire and performance skills. Now, they are ready to take their talents on the road! For these young musicians, many of who have Scandinavian roots, their upcoming tour in Sweden is an unparalleled opportunity to connect with renowned Swedish fiddlers dedicated to perpetuating Nordic traditions. The partnership will ensure that centuries-old folk traditions live on, in Scandinavia and in the Pacific Northwest. What a great way to pay tribute to the many Swedish immigrants who made this area their home!

The concert will begin at 3 pm, with tickets available at the door. The suggested donation is \$15 (\$30 for families). All proceeds go towards the Lilla Spelmanslag's summer travel expenses. Come on out for a wonderful show!

## LMLC News and Events

### ***Prayers Around the Cross - Lenten Worship***

#### **Midweek Simple Supper and Worship**

We continue our **Lent Soup Suppers on Wednesday evenings at 5:30 pm, followed by worship at 6:30.** Our worship during this Lenten season is

*Prayers Around the Cross*, a meaningful time of contemplative prayer, song, and Scripture.



**Wednesdays -**                      **5:30 pm - Soup Supper**  
**March 6, 13, and 20**            **6:30 pm - Worship**

#### **Holy Week**

**Sunday, March 24**  
***Passion/Palm Sunday***

**10 am: Worship** - This Sunday begins with Jesus' triumphal entrance into Jerusalem as we wave our palm branches and shout Hosanna! Before the Sunday is over, we are reminded of what is to come, of the meal in the Upper Room, the betrayal, and finally, of the cross.

**Thursday, March 28**  
***Maundy Thursday***

**5:30 pm: Agape Feast, followed by Worship** - You are cordially invited to an Agape Meal...a feast of lovingly magnificent proportions, prepared by your friends. Please join us at 5:30 for this time of food, festivity, and holy preparation for the three days that are ahead. A time of Worship will follow the meal.

***In order to prepare adequately,  
 please sign up in the narthex for this evening's meal.***

**Friday, March 29**  
***Good Friday***

**12 - 3 pm: The Sanctuary will be open for prayer and contemplation.**

**7 pm: Worship** - We will observe this night in song and scripture, as Awilda Verdejo and Hartwig Eichberg offer their gifts. This service is always a hauntingly beautiful reminder of Christ's sacrifice for us.

### **Easter Sunday is March 31, 2013**

Join us Sunday, March 31, to celebrate the Resurrection of Our Lord at Easter Celebration Worship! Luther Memorial has wonderful events on Easter morning, see you there!

**8:30 - 9:30 am: Pancake Breakfast and The Flowering of the Crosses-** A Luther Memorial tradition! Don't miss the scrumptious pancakes with all of the trimmings! Bring loose flowers from your garden or from the store (but not from your neighbor's garden without permission!) for the flowering of the three traditional crosses.

**10 am: Easter Celebration Worship**

# LMLC News and Events

## Recycling and Compost at Luther Memorial

On our website, we let the community know that *...the people of God at Luther Memorial Lutheran Church gather in order to serve God's Creation, our neighbors and to worship the Triune God, Father, Son, and Holy Spirit.* In order to do our part in serving God's Creation, we participate in the city of Seattle's yard waste and recycling program.

Here are a few reminders about what goes where on Sunday morning:

Compost	Recycling	Garbage
Paper plates	Outside coffee cups	Coffee stir sticks
Paper Coffee cups (empty)	Outside coffee lids	Creamer containers
All left-overs (grape stems, banana peels, egg shells, the rest of your cookie, etc.)	Paper from sugar packets	
Napkins	Bulletins	

You can help out our custodian by discarding these items in the proper bin. And if you have a question, just ask. There are also flyers available on the table outside the office.

## Luther Memorial Easter Lily Donations

13047 Greenwood Avenue North, Seattle, Washington 98133 | 206.364.2510

Easter Lilies can be given in memory or in honor of someone special to you. The cost is \$10; please make checks payable to LMLC with *Easter Lily* in the memo line, or put cash donations in an envelope similarly marked. Donations can be placed in the offering plate, or mailed to the church office. Please include this form with your dedication.

**All lilies will be placed in the Sanctuary on Easter morning – Sunday, March 31.**

I wish to donate  lilies at \$10 each *Please circle what type of dedication you would like.*

In memory/honor of:

In memory/honor of:

In memory/honor of:

Your name:

*Thank you for your contribution to our Easter Celebration.*

## LMLC News and Events

### Questions, Comments, and Kudos

At the Annual Meeting the congregation had the opportunity to fill out cards with questions, comments, or kudos (which are sort of like a pat on the back). We are happy to share some of those with you in this edition of The Messenger. If you have other questions, comments, or kudos to offer, you can find blank cards on the table in front of the office. Please be sure to sign your card – this allows us to be in mutual conversation.

“Now that Mary Walters has retired, who will be our Visitation Minister? Will we have one?”  
- Laurie Meade

*Pastor Julie and Vicar Inge have taken over the visitation of our homebound members, which had been Mary's ministry. At this writing, there are approximately twenty identified homebound members and it is our goal to visit them once a month.*

“It would be helpful to have access to copies of the Council minutes.” -Delia Broderick

*Council Meeting packets, which include the minutes from the last meeting, the agenda for the current meeting, the Pastor's report, the Vicar's report, the financial reports, and committee reports can be found on the table outside the office on the Sunday before the Council meeting. If they've all been taken, please email Kate in the office ([office@luthermemoralseattle.com](mailto:office@luthermemoralseattle.com)) and she will make sure you get one.*

“Kudos to all members of the Council” - Gordon Trombley

“Having cushions in only some pews might make it seem like not all are welcome.” - Heidi Gough

*It was determined at a Congregational Work Party that the cushions are soiled beyond repair and should be removed and, eventually, replaced. To avoid a fee at the landfill, we have been removing them a few at a time and taking them to our dumpster. It just so happens that we've started from the back. Cushions will remain on the mobility assisted pews at the transept (point where the pews form a cross shape.)*

### Vacation Bible School 2013

It is never too early to plan ahead!

Mark on your calendars August 12-16, for a very special Vacation Bible School! This summer we will have a group of young people from Lutherwood Bible Camp lead our VBS. There will be a special class for 3-5 year olds and another class for 1st graders through 5th graders. We will need some adult help with food preparations and assisting with the 3-5 year olds. More details will follow. See you in August!!





# LMLC News and Events

## Luther Memorial Concert Series Continues on March 10

The Luther Memorial 2013 Concert Series will continue on Sunday, March 10, at 3 pm. All concerts in the series will benefit programs and needs in the Greenwood community. Please join us to experience these amazing musicians from our community as they share their talents with us.

### Luther Memorial 2013 Concert Series Schedule

**March 10, 2013 | 3 pm**

**The Seattle Lilla Spelmanslag with Sprida Ut and other guests** - *tickets available at the door; suggested donation - \$15/person or \$30/family*

*The Seattle Lilla Spelmanslag is a group of young musicians that play traditional Scandinavian music. The word "lilla" in Swedish means young while the word "spelman" means fiddler and "lag" is a guild or society. Young people from age 8 to 18 come together to play, perform and enjoy folk music from Scandinavia within a community of young musicians.*

**Director: Martha Levenson**

**April 7, 2013 | 4 pm**

**Phinney Ridge Gospel Choir** - *free will offering*

**Director: Darren Hochstedler**

**May 5, 2013 | 4 pm**

**The Works of Brahms** - *free will offering*

*Awilda Verdejo sings eight of his beautiful songs, followed by the energetic and melodious 2nd Piano Trio, op. 87*

**Artists: Awilda Verdejo, soprano, Anita McEntyre, violin,  
Ron Welch, cello, and Hartwig Eichberg, piano**

**May 19, 2013 | 4 pm**

**Norwegian Ladies Chorus of Seattle** - *more information to follow*

*A Celebration of Norwegian Independence Day*

**Director: Julie Svendsen, Director**

**June 2, 2013 | 4 pm**

**Cello and Piano Recital** - *free will offering*

*Sonatas for cello and piano: in G by Johann Sebastian Bach and in A by César Franck*

**Artists: Ron Welch, Cello and Hartwig Eichberg, Piano**

# LMLC News and Events

## LMLC and St. John's Soup Kitchen



We here at Luther Memorial serve our community by providing soup for the St. John's Soup Kitchen on a monthly basis. Their Tuesday/Wednesday Soup Kitchen is in partnership with the Phinney Neighborhood Association; St. John United hosts the Soup Kitchen on Tuesdays at 5 pm and Wednesdays at noon. Now in its 24th year, the program provides hot, nutritious meals to anyone who comes. In 2002, the program served an average of 292 meals per week.

Every month, we are in need of three soup makers and one person to deliver the soup to St. John's. Soup will need to be picked up at the church between 2 and 3 pm on the last Tuesday of the month.

We are immediately in need of cooks for the month of March, which will be picked up between 3-3:30 pm on March 26. Soup cooks are welcome to use the kitchen and pots here at the church. You can also borrow the pots from the kitchen, and bring them in for delivery. Those that deliver always appreciate when the soup has time to cool before it is picked up, to ease getting the large pots into their vehicles and to the Soup Kitchen. If you use the pots or kitchen here, we just ask that you are able to wash the pots (which are returned to the LMLC kitchen), in a timely manner. The recipe is below, and can also be found on our website (on the We Serve page), and by the sign-up sheet.

If you have interest in making soup please sign-up on the board next to the office, or contact Shirlee Russo at 206-898-0226.

---

### Hamburger Vegetable Soup St. John's Soup Kitchen Recipe

**2 46 oz. cans V8 tomato vegetable juice**  
**2 small cabbages, shredded**  
**2 16-20 oz. packages mixed frozen vegetables (or use 8 cups chopped fresh vegetables)**  
**2 packages dry onion soup mix**  
**2 packages dry taco-seasoning mix**  
**2 15-16 oz. cans red beans**  
**2 lbs. hamburger**  
**12-16 cups water**

- Brown the hamburger and pour off accumulated fat.
- Place all ingredients in a large soup pot (12-14 quarts).
- Cover and simmer 45-60 minutes. Makes approximately 12 quarts.

The soup pots are stored in the center cabinet NW corner of the Fellowship Hall. Feel free to come and make the soup at Luther Memorial. When finished, please place the soup pot in the refrigerator in the kitchen.

**Thank you for your stewardship and service to our community!**

# LMLC News and Events

## ELCA Synods and Synod Bishops

Have you been wondering what entails the job of Synods and their Bishop? Here is some info gathered from our Synod. To find out more go to: <http://www.lutheransnw.org>.

**What is a Synod?** - The English word synod comes from two Greek words syn + hodos that mean "together road." A synod is the people of the congregations and other ministries traveling the way of faith together. Within the ELCA, a synod is also an administrative and missional geographic region, overseen by a bishop who provides direction to staff, a synod council, and volunteers. Synods vary greatly in size, geography, membership, staffing and program. There are 65 synods in the ELCA that are grouped into nine regions. In 2010 the ELCA had 4,541,309 members and 10,008 congregations.



**Synodical Leadership in the ELCA** - Each of the 65 synods of the ELCA elects one bishop and three synod council officers for leadership, vision, and expertise. In order to strengthen the relationship between synod leaders and the churchwide office, various units relate to and support the work of the leaders.

**The Bishop's Term of Office** - The bishop is elected to a six year term. In the Northwest Washington Synod there is a two term limit.

**The Election of a Bishop - NWWA Constitution 9.04** - The bishop shall be elected by vote at the synod assembly. The names of all persons nominated in accordance with the provisions of S9.04 and S9.04.01 shall be placed on the first ballot at the regular meeting of the synod assembly, except for any nominee(s) who withdraw(s) in writing. Three-fourths of the legal votes cast shall be necessary for election on the first ballot.

If no one is elected, the second ballot shall be limited to the seven persons (plus ties) who received the greatest number of legal votes cast on the first ballot. Two-thirds of the legal votes cast shall be necessary for election on the second ballot.

(If fewer than seven persons are on the first ballot and no one is elected, the election shall proceed to the third ballot, as provided below)

If no one is elected, the third ballot shall be limited to the three persons (plus ties) who received the greatest number of legal votes cast on the second ballot. Sixty percent of the legal votes cast shall be necessary for election on the third ballot.

If no one is elected, sub-sequent ballots shall be limited to the two persons (plus ties) who received the greatest number of legal cast votes on the previous ballot. A majority of the legal votes cast shall be necessary for election.

## Vicar's View

As I write this, the first signs of spring have already begun to appear. On my walks, I've seen the crocuses in bloom, blossoms on trees, and the days are getting noticeably longer. On our church property, the hydrangeas are budding, the witch hazel is blooming outside the office window in full yellow, and the Lily bulbs are coming up in the garden, a hopeful sign of the bright beauty and praise that will accompany the Easter season. Signs of spring are all around us, in small but nevertheless real ways.

I heard Lent referred to recently as the "springtime of the soul," and I liked this description of what I otherwise associate with a somber and penitential season of the church year. "Lent" does in fact come from an old English word meaning spring. I know church communities who bring in flowers from their gardens on Easter morning and

cover the barren cross of Good Friday, in celebration of God's power to bring life out of death. But I wonder if in fact Lent is actually a slow, almost imperceptible, springtime of the soul. Instead of a magic moment where the flowers suddenly bloom on Easter Sunday, the season of Lent invites us to watch for the gradual signs of God's presence and new life in our midst.



Lent is a time for the blossoming of our souls as we grow in relationship with God. The traditional Lenten practices of prayer, almsgiving, and fasting are opportunities to deepen our relationship with God, and in our modern day economy, I've heard of some interesting fasting practices: look out the window until you see something beautiful you've never noticed before, no whining day, take 5 minutes of silence at noon, walk outside every day no matter the weather.

These things aren't meant to make us suffer

for the sake of suffering, but to make room in the busyness of our lives to hear God's voice and see God's actions all around us and within us. During Lent, we are invited to pay attention to God's promise: "See, I am making all things new." (Rev. 21:5)

I like the term springtime of our souls because it signifies that Lent is a

time of transformation. Martin Luther wrote extensively about God's presence within and all around us, and he was passionate about hearing the Word of God in worship and receiving communion because he was convinced that these are ways God is present to us and that they are transformative. Another local congregation's tag line is "God's love will change us." And Martin Luther was

## Vicar's View

convinced, too, that God's grace would change us from people "turned in on themselves" (= self-obsessed) to people who are vessels of God's grace and love, happy to give and share of themselves in community for the sake of the common good. Martin Luther believed that God would grow in us- never completely, but in a gradual unfolding, always as God's gracious gift.

What new thing is God doing, in your own heart and mind, and in the world around us? Where is God's loving purpose becoming apparent, and where is something destructive dying off? "God is present in all creatures, even in the tiniest tree leaf," said Martin Luther. May we be attentive this Lent to the ways God's springtime is unfolding, for us and in all of creation.

Thanks be to God, Amen!

Vicar Inge Williams



### ***The earth is the Lord's and all that dwells therein.***

On February 10, our worship focused on creation and God's calling for humans to be good stewards of all that God has made (Gen. 2:15). Vicar Inge preached about climate change as a part of the National Preach-In on Global Warming, sponsored by Interfaith Power and Light. On that weekend, people of faith from all backgrounds- Jews, Muslims, Christians, Buddhists, Sikhs- spoke to the sacredness of God's creation and raised awareness about the dangers of climate change. Our congregation sent 60 postcards to President Obama, urging him to "protect our children from the dangerous power of a warming planet."

Thanks to all who participated!

# NW WA Synod News

Volume 30, Number 2  
March 2013

**Always**  
being made  
**New.**  
25 YEARS TOGETHER IN CHRIST

## The Spirit

### God Has Called Us To Be The Church

by **The Rev. Wm Chris Boerger, Bishop**



It is that time of year for annual meetings, reviews of the past year and preparation for the new year. It is time for the annual health risk assessment. It is time to file the parochial report and for rostered leaders to send in their annual report to the bishop. It is a time of evaluation and renewal.

I continue to ask for these reports and reflections. They are not our primary work

and there are good questions being ask if they even reflect the church we should be or just the church that we used to be. I do think that this is a good question.

How do we actually share the information about what our congregations and worshipping communities are doing? Is it in the numbers or the activity or in some other statistical measurement?

I am confident that the numbers do not tell the whole story. But the numbers are giving us a disturbing picture. As a synod, most of our congregations are seeing declining numbers in worship, in membership and in educational classes. That may not be a complete picture but it is a warning symptom of changes we need to face.

The ELCA Conference of Bishops is asking questions about what will the church, specifically on the local level, look like in the future. Can we afford full time professional clergy? Are our buildings tools

to advance the gospel mission or monuments to an institutional past? How should we share the gospel with the neighbor and the stranger and give a cup of cold water to those in need? These questions do not have easy answers. The complexity of the issues cannot be dismissed.

These are the times in which God has called us to be the church. The church is the Body of Christ in the world for the life of the world and the work of God. That is our mission.

We have a long history as an institution. What it will mean for the future is not clear. The church, as God's work, will continue. I am confident that God is still calling us to do God's work in the world, in our neighborhoods and in our homes. How we will train leaders is changing. How we will assemble as the local communities of faith is changing. How we will work together as God's people around the globe is changing.

So I ask you to file the appropriate reports. I know that they do not tell the whole story. As we have these conversations it is helpful for us to see the partial snapshots that these reports give us. We will be changed and that is good news.

#### **2013 Synod Assembly and Bishop Election**

Thursday, May 16, through Saturday, May 18

Lynnwood Convention Center  
[www.lutheransnw.org/assembly2013](http://www.lutheransnw.org/assembly2013)

# NW WA Synod News

## Here 'n There

■ **Women of Region 1 Gathering at Heathman Lodge, Vancouver WA**—ELCA Women from Alaska, Washington, Oregon, Idaho, and Montana will be gathered together for a weekend of fun, fellowship and learning. Keynote Speaker is author, Jane Kirkpatrick. Introduction to the fall "Gather" magazine Bible Study by author Bishop Kay Ward. Registration begins at 3 p.m. on June 21, with dinner at 6 p.m. The event ends at noon on Sunday, June 23. The location is: Heathman Lodge, 7801 NE Greenwood Dr., Vancouver, WA. Need more information? Nancy Quale at 425-746-6559 or email her at [nquale@comcast.net](mailto:nquale@comcast.net).

■ The Holiday Food Basket Ministry at **Advent Lutheran Church in Mill Creek** has grown to become a community-wide effort with many sponsors: US Navy Commissary in Marysville, Staples, Central Market in Mill Creek, Lowe's and Costco. To fuel the volunteers, coffee was donated by Starbucks and dozens of donuts arrived from three local donut stores. All told, 100 volunteers filled grocery bags that were then delivered to 200 families, around 800 people.

■ **Pastor Nadia Bolz-Weber**, an ELCA pastor in Colorado and mission developer, was well received as she spoke to the 40,000 youth at 2012 ELCA Youth Gathering in New Orleans. Our synod youth will have a chance to hear her again at 7 p.m. on Saturday, March 2, at St. Luke's Lutheran Church, 3030 Bellevue Way NE, Bellevue 98004. This event is aimed at the youth/youth groups of the synod. A free will offering will be asked to help offset costs. If you have any questions about the event or to express interest in attendance, please contact Janet Cederberg, Associate in Ministry, at [janet@slukes.org](mailto:janet@slukes.org).

■ The **installation of the newly elected bishop** (elected at the 2013 Northwest Washington Synod, May 16-18) will take place on Sunday, September 15. Time and location to be determined.

■ The **opening worship service** for the 2013 Northwest Washington Synod Assembly will take place on Thursday, May 16, at Trinity Lutheran Church in Lynnwood. **ELCA Presiding Bishop**

**Mark Hanson will participate in the worship.** Everyone in our synod is invited to join assembly voting members in this worship service. Time to be determined. More details will be available on the synod's website at [www.lutheransnw.org](http://www.lutheransnw.org).

■ **Germany in December 2013?** Faith Journeys presents a 10-day Reformation & Christmas Market Tour to Germany this December with host **Pastor Bjoern Meinhardt of Vashon Lutheran Church, Vashon Island**. Contact Pastor Bjoern for more information at [vlc98070@centurytel.net](mailto:vlc98070@centurytel.net) or 206-463-2655.

■ In April, members of **Kent Lutheran Church in Kent** will be headed to South Sudan for their second mission trip. The group's primary goal is to drill a well in Malual, South Sudan. The reason? Eighty percent of fatal diseases in Africa's developing countries are preventable with clean water. The travelers will also be delivering essential first aid and medical supplies; education supplies; Nuer Bibles; and, as space permits, Little Dresses and Little Shorts for Africa. Learn more at:

<http://www.klcsouthsudan.blogspot.com/>

*The Spirit*, a publication of the Northwest Washington Synod of the Evangelical Lutheran Church in America (ELCA), is intended for members, leaders, and clergy of synod congregations and organizations. Congregations are encouraged to copy *The Spirit* and include it in their own newsletters. *The Spirit* can be downloaded from the Synod website.

### Northwest Washington Synod, ELCA

5519 Phinney Ave North  
Seattle, WA 98103-5829  
Telephone: 206-783-9292  
Toll Free: 1-800-244-6997  
Fax: 206-783-9833  
Email: [office@lutheransnw.org](mailto:office@lutheransnw.org)

### Editor: Margit Peiffle

Email: [margit@lutheransnw.org](mailto:margit@lutheransnw.org)  
Telephone: 206-783-9292  
Website: [www.lutheransnw.org](http://www.lutheransnw.org)

Information for the April issue of *The Spirit* is due to the Synod Office by Wednesday, March 6.

# ELCA Prayer Ventures

*These petitions are offered as guides to prayer for the global, social and outreach ministries of the church. Thank you for your continued prayers for the life and mission of this church.*



**Evangelical Lutheran Church in America**

God's work. Our hands.

**1** Remember in your prayers the members of the Roman Catholic Church, both the clergy and the lay people, during the process of choosing a successor to Pope Benedict XVI.

**2** Pray for Ella Vandervlugt, an ELCA missionary teaching in Bratislava, Slovakia.

### **3 Third Sunday in Lent**

Gracious God, help us to remember that you were here when the world was made. Help us to trust in your faithfulness, and to know that in an unpredictable and chaotic world, you will always remain.

**4** Give thanks for the lifesaving ministry of Dr. Mark L. Jacobson, an ELCA missionary in Tanzania who was awarded the 2013 Dr. Nathan Davis International Award in Medicine from the American Medical Association for his work in that country.

**5** Remember in your prayers Kjerstin Sanden, who is spending a year volunteering in Buenos Aires, Argentina, as part of the ELCA Young Adults in Global Mission program.

**6** In light of the decision by the Ethiopian Evangelical Church Mekane Yesus to sever its relationship with the ELCA and other churches, pray for the global ecumenical movement and for a healthy dialogue among the varied Christian traditions around the world.

**7** Pray for ELCA Young Adults in Global Mission participant Adam "Lee" Kirberg, whose volunteer work in Madagascar includes teaching.

**8** Include in your prayers Robin Strickler, an ELCA missionary in Rwanda serving in education administration.

**9** Pray for Carolyn Stypka, an ELCA missionary teaching English as a second language in Tokyo.

### **10 Fourth Sunday in Lent**

Dear Lord, embrace us in your mercy. Hold us close in your great grace and compassion, that we may show the same love to others as you have shown to us.

**11** Pray for ELCA missionaries Dr. Helmut and Rotraut Diefenthal and their work as radiology trainers in Tanzania.

**12** Pray for the children in the world's refugee camps. More than half of the Syrians in Jordan's Za'atri camp are under the age of 18.

**13** Pray for the Rev. Peter Harrits, the ELCA Young Adults in Global Mission coordinator for Malaysia, as he helps guide young volunteers through their year of service with the program.

**14** Give thanks for the ELCA Malaria Campaign and the global effort to fight malaria in Africa, which has helped slow the rate of deaths from the disease there.

**15** Pray for Patrick Cudahy, who is teaching for a year in Malaysia as an ELCA Young Adults in Global Mission volunteer.

**16** Pray for the ministries of the pastors of the ELCA who daily share the love and saving grace of Jesus Christ.



## ELCA Prayer Ventures

### **17 Fifth Sunday in Lent**

Merciful God, we thank you again for another week and another morning, for calling us to be your servants all the days of our lives.

**18** Lift up the many people still suffering from the effects of the economic collapse. May the love of God and the kindness and concern of others help them find joy and stability in their lives.

### **19 Joseph, Guardian of Jesus**

Pray for Elizabeth Michell, an ELCA missionary teaching in Bratislava, Slovakia.

**20** Pray for Kristen Lee and her service in Mexico as an ELCA Young Adults in Global Mission volunteer.

**21** Pray for the congregations of the ELCA as they strive to do God's work with their hands often amid difficult social and economic circumstances.

**22** Remember Rebecca Wicker in your prayers as she walks in accompaniment with new friends in Malaysia as an ELCA Young Adults in Global Mission program participant.

**23** Pray for Barbara Robertson and her ELCA missionary work providing HIV and AIDS education in Tanzania.

### **24 Palm Sunday/Passion Sunday**

Everlasting God, like your Son and Servant, Jesus Christ, riding into Jerusalem, help us to go where you've called us boldly and confidently. Prepare us for what lies before us, however difficult the journey may be.

**25** Pray for ELCA missionaries the Rev. Jose David Rodriguez and Kathryn Baker and their work with future pastors at a seminary in Buenos Aires, Argentina.

**26** Give thanks for those who through Kalos, the ELCA legacy society, have designated a gift in their will, trust or to an endowment to support the work of this church.

**27** Pray for Samantha Berglund, an ELCA Young Adults in Global Mission volunteer serving with a Christian residential outdoor activity center in Tollesbury, England.

### **28 Maundy Thursday**

Pray for all those who, like Jesus on the night of the Last Supper, are facing trials and tribulations that they may feel the strength of God by their side.

### **29 Good Friday**

O God, on this day we give thanks for your unending love manifested through Christ's suffering on the cross that through him we may share in the peace and joy of the victory over death. In Jesus' name we pray. Amen.

### **30 Vigil of Easter**

Pray for the Rev. David and Alicia Brondos, ELCA missionaries in Mexico City, and their ministry of theological education.

### **31 Resurrection of Our Lord, Easter Day**

O God, on this day when the tomb of our Lord and Savior was found empty, we rejoice in knowing that Jesus is indeed resurrected and alive. Let us not forget the joy and hope we find in his resurrection. Help us to be made new just as Christ was dead but rose again.

*This resource may be copied and shared among members and friends of the congregations of the Evangelical Lutheran Church in America. Contact [info@elca.org](mailto:info@elca.org) for additional information. Evangelical Lutheran Church in America, 8765 West Higgins Road, Chicago, IL 60631. Telephone: 800-638-3522, ext. 2458.*

# Worship Leaders

## March Worship Leaders Sundays

	March 3	March 10	March 17	<i>Passion/Palm Sunday</i> March 24	<i>Easter Sunday</i> March 31
<b>Assisting Minister</b>	Steve Olson	Vicar Inge Williams	Gordon Trombley	Paul Olsen	Vicar Inge Williams
<b>Lector</b>	Sandy Jamieson	Ellie Long	Donna Smith	Steve Olson	Audrey Long
<b>Acolyte</b>	Donna Smith	Sandy Jamieson	Kyle Gough	Ben Smith	Jackson Terhark
<b>Altar Care</b>	Diane Chapman and Donna Smith				
<b>Communion Care</b>	Vicki Cook				
<b>Greeters and Ushers</b>	Laurie Meade Bill Meade	Gordon Trombley Steve Olson	Diane Chapman Donna Smith	Ryan and Leia Smith Cory Stever	Bjorg Hansen Donna Smith
<b>Song Leaders</b>	Vicki Cook	Paul Olsen	Kris Johansson	Kate Nelson-Penland	Julie Moe Janice Sherlock
<b>Musicians</b>	Dean Jamieson	Dean Jamieson	Hart Eichberg	Hart Eichberg	Hart Eichberg Ron Barrow

<b>Crucifer</b>	Gordon Trombley	Paul Olsen
-----------------	-----------------	------------

<b>Flowered Cross Bearers</b>	Laurie Meade Gordon Trombley Diane Chapman
-------------------------------	--

<b>Banner Bearers</b>	Don Bannister Ethan Bannister
-----------------------	----------------------------------

<b>Additional Communion Care</b>	Gordon Trombley TBD
----------------------------------	------------------------

## March Worship Leaders Holy Week - March 28 and 29

	<i>Maundy Thursday</i> March 28	<i>Good Friday</i> March 29
<b>Assisting Minister</b>	<i>To be determined- please see Weekly Bulletins for updated information.</i>	TBD
<b>Lector</b>		Pastor Julie Hutson
<b>Acolyte</b>		Gordon Trombley
<b>Greeters and Ushers</b>		Donna Smith Steve Olson
<b>Musicians</b>		Awilda Verdejo Hart Eichberg

***Thank you to all that volunteer to help lead worship. If anyone is interested, but did not return a Time and Talent form or has not been recently scheduled, please let Pastor Julie know!***

# Readings and Celebrations

## March Lectionary Readings

<b>March 3 </b> Lent 3	<b>March 10 </b> Lent 4	<b>March 17 </b> Lent 5	<b>March 24 </b> Passion/Palm Sunday
Isaiah 55:1–9	Joshua 5:9–12	Isaiah 43:16–21	Isaiah 50:4–9a
Psalms 63:1–8	Psalms 32	Psalms 126	Psalms 31:9–16
1 Corinthians 10:1–13	2 Corinthians 5:16–21	Philippians 3:4b–14	Philippians 2:5–11
Luke 13:1–9	Luke 15:1–3, 11b–32	John 12:1–8	Luke 22:14–23:56
<b>March 28 </b> Maundy Thursday	<b>March 29 </b> Good Friday	<b>March 31 </b> Easter Sunday	
Exodus 12:1–4[5–10] 11–14	Isaiah 52:13–53:12	Acts 10:34–43	
Psalms 116:1–2, 12–19	Psalms 22	Psalms 118:1–2, 14–24	
1 Corinthians 11:23–26	Hebrews 10:16–25	1 Corinthians 15:19–26	
John 13:1–17, 31b–35	John 18:1–19:42	Luke 24:1–12	

## Happy March Birthdays!

- |   |                                     |
|---|-------------------------------------|
| <b>3</b> Gustavo Peña<br>Bonnie Kaiser  | <b>20</b> Norman Swenson            |
| <b>5</b> Ryan Harveland<br>Emily Meade  | <b>21</b> Karen Senior              |
| <b>7</b> Elaine Hardin<br>Shirley Yandl | <b>25</b> Mary Ellen St. Clair      |
| <b>11</b> Owen Lynn                     | <b>26</b> Chandra Johnson           |
| <b>12</b> Nancy Sandbloom               | <b>27</b> Gavin Gough               |
| <b>18</b> Eula Juilfs                   | <b>28</b> Dora Smith                |
|   | <b>31</b> Naomi Steele<br>Ryan Lynn |

*Let us remember these fellow members on their special days by rejoicing and celebrating together.*

Luther Memorial Lutheran Church Calendar

March 2013

\* Bold indicates evenings

	Sunday	Monday	Tuesday	Wednesday	Thursday	Friday	Saturday
<b>3</b>	9 First Sunday Faith Forum, Fruits of the Spirit Breakfast and Sunday School 10 Worship 11:30 Fellowship <i>Worship and Music Committee Meeting</i>	<b>4</b>	<b>5</b> 7 Early Ford V-8 Club	<b>6</b> 9:30 Seekers 5:30 AI-Anon 5:30 Lenten Soup Supper and Worship	<b>7</b>	<b>8</b> 6 Cub Scouts - Webelos I	<b>9</b>
<b>10</b>	8:30 Choir Rehearsal 9 Fruits of the Spirit Breakfast and Sunday School 10 Worship 11:30 Fellowship and <i>Facilities &amp; Maintenance Work Party</i> <b>3 Luther Memorial 2013 Concert Series II - Lilla Spelmanslag with Sprida Ut and other Guests</b>	<b>11</b> 10 North End Bible Study 1:30 Book Brigade	<b>12</b> 6 LMLC Council Meeting 6:30 Cub Scouts - Bears	<b>13</b> 9:30 Seekers 10 Retired Firefighters of Seattle 5:30 AI-Anon 5:30 Lenten Soup Supper and Worship	<b>14</b> 6:30 Youth Justice	<b>15</b> 6 Cub Scouts - Tigers	<b>16</b> 6 pm LMLC Movie Night - Jesus Christ Superstar
<b>17</b>	8:30 Choir Rehearsal 9 Fruits of the Spirit Breakfast and Sunday School 10 Worship 11:30 Fellowship	<b>18</b>	<b>19</b> 6:30 Broadview Community Council	<b>20</b> 9:30 Seekers 5:30 AI-Anon 5:30 Lenten Soup Supper and Worship 6 Broadview Prepares 7 Spiritual Growth Meeting	<b>21</b> 6:30 Youth Justice	<b>22</b>	<b>23</b>
<b>24</b>	<b>PASSION/PALM SUNDAY</b> 8:30 Choir Rehearsal 9 Fruits of the Spirit Breakfast and Sunday School 10 Worship 11:30 Fellowship <b>3:30 Lilla Spelmanslag Rehearsal</b>	<b>25</b>	<b>26</b> 4 Lilla Spelmanslag Fiddling Workshop 6 Cub Scouts - Pack 321	<b>27</b> 9:30 Seekers 5:30 AI-Anon	<b>28</b> <b>MAUNDY THURSDAY</b> 5:30 Agape Feast 6:30 Maundy Thursday Service	<b>29</b> <b>GOOD FRIDAY</b> 12-3 Sanctuary open for prayer and contemplation 7 Good Friday Service	<b>30</b>
<b>31</b>	<b>EASTER SUNDAY</b> 8:30 Choir Rehearsal 8:30-9:30 Easter Celebration Pancake Breakfast and The Flowering of the Crosses 10 Easter Celebration Worship 11:30 Fellowship		<b>LUTHER MEMORIAL</b> lutheran church				